

Yoquivo

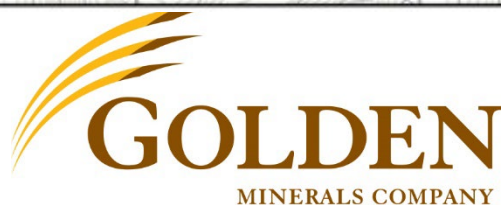
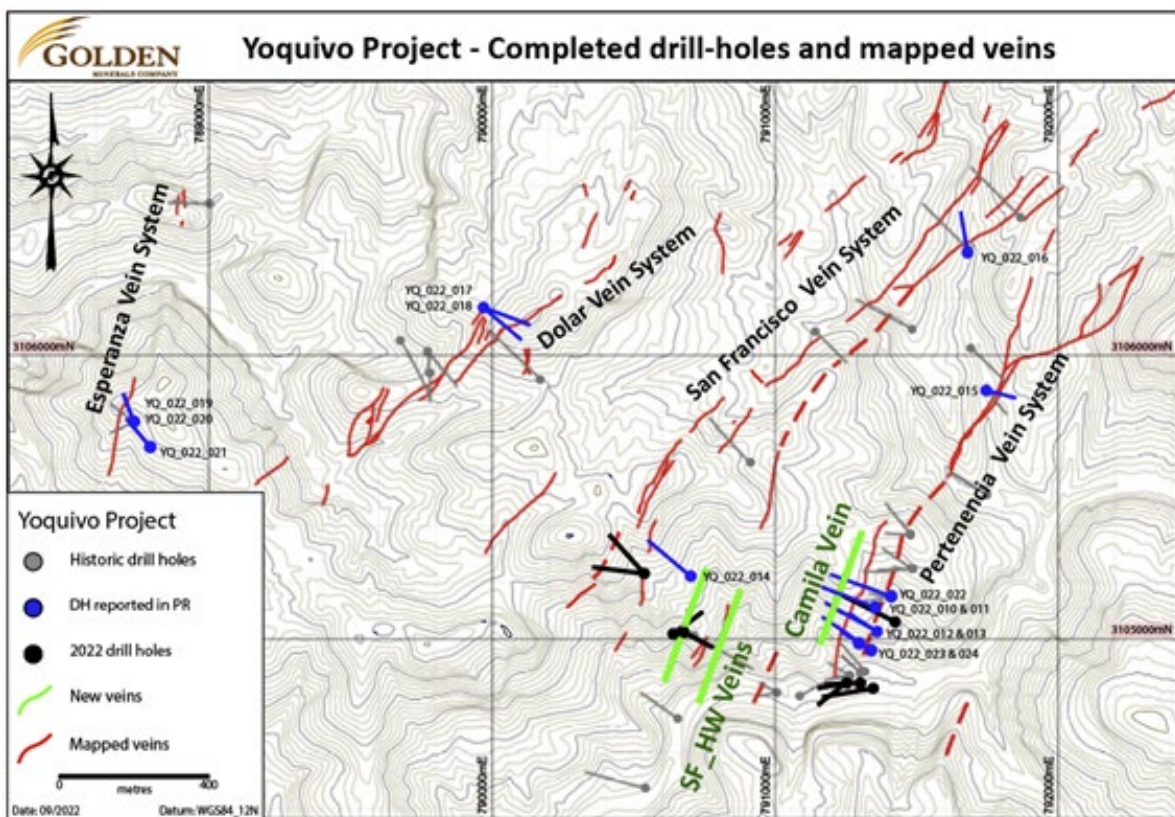
Gold-Silver Project

Chihuahua State, Mexico

2022 (Third) Drill Program:

Complete results (holes 1-24)

Reported Sept. 12, 2022



Yoquivo Gold-Silver Project - 2022 Drill Program - Collars

Hole ID	Easting WGS84	Northing WGS84	Elevation (m)	Azimuth	Inclination	Length (m)
YQ_022_001	791248	3104847	1996	260	-45	143
YQ_022_002	791248	3104845	1997	230	-45	180
YQ_022_003	791301	3104853	2000	265	-45	180
YQ_022_004	791345	3104831	2006	260	-45	261
YQ_022_005	790540	3105225	2213	280	-45	265
YQ_022_006	790541	3105226	2212	320	-45	261
YQ_022_007	790641	3105025	2118	55	-45	175
YQ_022_008	790685	3105026	2123	120	-45	162
YQ_022_009	791421	3105056	2063	295	-45	306
YQ_022_010	791351	3105109	2100	292	-75	300
YQ_022_011	791350	3105109	2100	290	-45	300
YQ_022_012	791370	3105013	2068	295	-45	300
YQ_022_013	791369	3105014	2068	295	-65	303
YQ_022_014	790692	3105227	2178	310	-45	275
YQ_022_015	791749	3105881	2060	105	-45	150
YQ_022_016	791678	3106348	2107	350	-45	201
YQ_022_017	789971	3106168	2341	130	-45	250
YQ_022_018	789971	3106170	2341	110	-45	250
YQ_022_019	788736	3105767	2283	340	-45	150
YQ_022_020	788735	3105768	2283	340	-60	180
YQ_022_021	788793	3105678	2283	320	-65	300
YQ_022_022	791407	3105146	2087	290	-55	351
YQ_022_023	791306	3104978	2041	310	-45	150
YQ_022_024	791348	3104962	2033	300	-45	300

Projected Coordinate System

WGS 84 datum / UTM zone 12N

Yoquivo Gold-Silver Project - 2022 Drill Program - Assays

Hole ID	Sample ID	From (m)	To (m)	Interval (m)	Au (ppm)	Ag (ppm)
YQ_022_001	MCD006401	7.35	8.05	0.70	0.00	0.6
YQ_022_001	MCD006402	8.05	8.50	0.45	0.00	0.3
YQ_022_001	MCD006403	8.50	9.70	1.20	0.00	0.3
YQ_022_001	MCD006404	9.70	10.90	1.20	0.00	0.3
YQ_022_001	MCD006405	10.90	11.25	0.35	0.00	0.3
YQ_022_001	MCD006406	11.25	12.20	0.95	0.00	0.3
YQ_022_001	MCD006407	15.70	16.65	0.95	0.00	0.3
YQ_022_001	MCD006408	16.65	17.00	0.35	0.00	0.3
YQ_022_001	MCD006409	17.00	17.55	0.55	0.01	0.8
YQ_022_001	MCD006411	30.95	32.00	1.05	0.00	3.1
YQ_022_001	MCD006412	32.00	32.85	0.85	0.02	2.8
YQ_022_001	MCD006413	32.85	33.15	0.30	0.01	2.1
YQ_022_001	MCD006414	33.15	34.25	1.10	0.00	1.0
YQ_022_001	MCD006415	39.65	40.20	0.55	0.00	0.3
YQ_022_001	MCD006416	40.22	41.55	1.33	0.00	0.3
YQ_022_001	MCD006417	41.55	42.20	0.65	0.00	0.5
YQ_022_001	MCD006418	42.20	43.40	1.20	0.00	0.6
YQ_022_001	MCD006419	50.70	51.80	1.10	0.50	68.5
YQ_022_001	MCD006421	51.80	52.00	0.20	0.09	8.9
YQ_022_001	MCD006422	52.00	53.00	1.00	0.01	1.9
YQ_022_001	MCD006423	66.45	67.20	0.75	0.02	1.7
YQ_022_001	MCD006424	67.20	67.80	0.60	0.03	3.3
YQ_022_001	MCD006425	67.80	68.55	0.75	0.01	1.1
YQ_022_001	MCD006426	80.40	81.90	1.50	0.00	0.3
YQ_022_001	MCD006427	81.90	82.30	0.40	0.00	0.3
YQ_022_001	MCD006428	82.30	83.00	0.70	0.00	0.3
YQ_022_001	MCD006429	83.00	84.10	1.10	0.00	0.3
YQ_022_001	MCD006431	97.35	98.55	1.20	0.19	1.4
YQ_022_001	MCD006432	98.55	98.65	0.10	0.16	1.4
YQ_022_001	MCD006433	98.65	100.15	1.50	0.01	0.3
YQ_022_001	MCD006434	102.80	104.20	1.40	0.00	0.3
YQ_022_001	MCD006435	104.20	104.65	0.45	0.01	1.2
YQ_022_001	MCD006436	104.65	105.55	0.90	0.00	0.3
YQ_022_001	MCD006437	112.10	112.80	0.70	0.00	0.3
YQ_022_001	MCD006438	112.80	112.95	0.15	0.01	0.3
YQ_022_001	MCD006439	112.95	114.35	1.40	0.00	0.3
YQ_022_001	MCD006441	114.35	115.45	1.10	0.01	0.6
YQ_022_001	MCD006442	115.45	116.50	1.05	0.01	0.3
YQ_022_001	MCD006443	116.50	117.00	0.50	0.01	0.3
YQ_022_001	MCD006444	117.00	118.50	1.50	0.00	0.3
YQ_022_001	MCD006445	118.50	120.00	1.50	0.10	0.3
YQ_022_001	MCD006446	120.00	121.00	1.00	0.00	0.3
YQ_022_001	MCD006447	121.00	121.15	0.15	0.04	18.3
YQ_022_001	MCD006448	121.15	122.00	0.85	0.02	9.2
YQ_022_001	MCD006821	122.00	122.75	0.75	0.03	0.7
YQ_022_001	MCD006822	122.75	124.25	1.50	0.01	0.3
YQ_022_001	MCD006823	131.00	131.60	0.60	0.01	0.3
YQ_022_001	MCD006824	131.60	132.10	0.50	0.07	0.3
YQ_022_001	MCD006825	140.00	141.50	1.50	0.05	0.5
YQ_022_001	MCD006826	141.50	141.70	0.20	7.29	0.6
YQ_022_001	MCD006827	141.70	143.00	1.30	0.11	4.5
YQ_022_002	MCD006449	15.76	16.85	1.09	0.00	0.3

Yoquivo Gold-Silver Project - 2022 Drill Program - Assays

Hole ID	Sample ID	From (m)	To (m)	Interval (m)	Au (ppm)	Ag (ppm)
YQ_022_002	MCD006576	16.85	17.75	0.90	0.00	0.3
YQ_022_002	MCD006577	17.75	18.25	0.50	0.00	0.3
YQ_022_002	MCD006578	18.25	19.15	0.90	0.00	0.3
YQ_022_002	MCD006579	19.15	20.25	1.10	0.00	0.8
YQ_022_002	MCD006581	20.25	21.00	0.75	0.01	0.3
YQ_022_002	MCD006582	21.00	22.00	1.00	0.00	0.3
YQ_022_002	MCD006583	22.00	22.05	0.05	0.01	0.6
YQ_022_002	MCD006584	22.05	22.45	0.40	0.00	0.3
YQ_022_002	MCD006585	29.00	30.40	1.40	0.00	0.3
YQ_022_002	MCD006586	30.40	30.55	0.15	0.00	0.3
YQ_022_002	MCD006587	30.55	31.15	0.60	0.00	0.3
YQ_022_002	MCD006588	44.35	45.50	1.15	0.11	9.1
YQ_022_002	MCD006589	45.50	46.60	1.10	0.08	11.7
YQ_022_002	MCD006591	46.60	47.60	1.00	0.03	4.2
YQ_022_002	MCD006592	47.60	47.90	0.30	0.68	78.5
YQ_022_002	MCD006593	47.90	49.30	1.40	0.40	38.1
YQ_022_002	MCD006594	49.30	50.30	1.00	1.82	297.0
YQ_022_002	MCD006595	50.30	51.15	0.85	0.12	12.4
YQ_022_002	MCD006596	51.15	52.50	1.35	0.03	3.7
YQ_022_002	MCD006597	52.50	54.00	1.50	0.19	20.0
YQ_022_002	MCD006598	54.00	55.50	1.50	0.75	57.7
YQ_022_002	MCD006599	55.50	57.00	1.50	0.11	14.9
YQ_022_002	MCD006626	57.00	58.50	1.50	0.06	11.1
YQ_022_002	MCD006627	58.50	60.00	1.50	0.03	3.7
YQ_022_002	MCD006628	60.00	61.50	1.50	0.03	3.4
YQ_022_002	MCD006629	61.50	63.00	1.50	0.05	7.4
YQ_022_002	MCD006631	63.00	64.30	1.30	0.07	10.3
YQ_022_002	MCD006632	64.30	65.20	0.90	0.07	26.5
YQ_022_002	MCD006633	65.20	65.40	0.20	0.19	82.1
YQ_022_002	MCD006634	65.40	66.90	1.50	0.17	23.8
YQ_022_002	MCD006635	99.60	100.90	1.30	0.00	0.5
YQ_022_002	MCD006636	100.90	101.55	0.65	0.00	0.3
YQ_022_002	MCD006637	101.55	101.70	0.15	0.00	0.8
YQ_022_002	MCD006638	101.70	102.65	0.95	0.02	1.0
YQ_022_002	MCD006639	102.65	104.05	1.40	0.03	0.7
YQ_022_002	MCD006641	123.00	123.95	0.95	0.00	0.3
YQ_022_002	MCD006642	123.95	124.10	0.15	0.00	0.3
YQ_022_002	MCD006643	124.10	125.60	1.50	0.00	0.3
YQ_022_002	MCD006644	130.45	131.60	1.15	0.00	0.3
YQ_022_002	MCD006645	131.60	132.70	1.10	0.00	0.3
YQ_022_002	MCD006646	132.70	133.40	0.70	0.00	0.3
YQ_022_002	MCD006647	133.40	134.20	0.80	0.00	0.3
YQ_022_002	MCD006648	134.20	134.70	0.50	0.00	0.3
YQ_022_002	MCD006649	134.70	136.00	1.30	0.00	0.3
YQ_022_002	MCD006651	136.00	137.50	1.50	0.00	0.3
YQ_022_002	MCD006652	137.50	139.00	1.50	0.02	0.8
YQ_022_002	MCD006653	139.00	139.90	0.90	0.00	0.3
YQ_022_002	MCD006654	139.90	140.20	0.30	0.01	0.3
YQ_022_002	MCD006655	140.20	140.60	0.40	0.00	0.3
YQ_022_002	MCD006656	140.60	141.55	0.95	0.00	0.3
YQ_022_002	MCD006657	141.55	141.65	0.10	0.00	0.3
YQ_022_002	MCD006658	141.65	143.15	1.50	0.00	0.3
YQ_022_002	MCD006659	145.75	146.45	0.70	0.00	1.6

Yoquivo Gold-Silver Project - 2022 Drill Program - Assays

Hole ID	Sample ID	From (m)	To (m)	Interval (m)	Au (ppm)	Ag (ppm)
YQ_022_002	MCD006661	146.45	147.00	0.55	0.01	1.6
YQ_022_002	MCD006662	147.00	147.65	0.65	0.01	2.1
YQ_022_002	MCD006663	147.65	147.95	0.30	0.00	1.9
YQ_022_003	MCD006664	14.50	15.85	1.35	0.00	1.0
YQ_022_003	MCD006665	15.85	16.30	0.45	0.00	1.6
YQ_022_003	MCD006666	16.30	17.70	1.40	0.00	0.7
YQ_022_003	MCD006667	17.70	19.10	1.40	0.01	1.1
YQ_022_003	MCD006668	19.10	19.60	0.50	0.01	1.0
YQ_022_003	MCD006669	19.60	21.10	1.50	0.00	0.9
YQ_022_003	MCD006671	27.50	29.00	1.50	0.00	0.8
YQ_022_003	MCD006672	29.00	29.75	0.75	0.01	1.2
YQ_022_003	MCD006673	29.75	30.60	0.85	0.00	1.4
YQ_022_003	MCD006674	30.60	31.60	1.00	0.00	0.9
YQ_022_003	MCD006675	31.60	33.00	1.40	0.00	0.6
YQ_022_003	MCD006676	33.00	33.30	0.30	0.01	0.7
YQ_022_003	MCD006677	69.90	70.80	0.90	0.29	17.2
YQ_022_003	MCD006678	70.80	71.80	1.00	0.01	0.9
YQ_022_003	MCD006679	71.80	71.90	0.10	0.01	3.1
YQ_022_003	MCD006681	71.90	72.90	1.00	0.41	59.8
YQ_022_003	MCD006682	72.90	73.20	0.30	3.10	753.0
YQ_022_003	MCD006683	73.20	74.45	1.25	0.09	2.8
YQ_022_003	MCD006684	81.10	82.25	1.15	0.01	0.8
YQ_022_003	MCD006685	82.25	82.45	0.20	0.66	61.6
YQ_022_003	MCD006686	82.45	84.35	1.90	0.01	2.1
YQ_022_003	MCD006687	84.35	84.80	0.45	0.75	49.6
YQ_022_003	MCD006688	84.80	85.75	0.95	0.08	1.6
YQ_022_003	MCD006689	85.75	85.85	0.10	0.01	0.6
YQ_022_003	MCD006691	85.85	87.00	1.15	0.31	2.2
YQ_022_003	MCD006692	87.00	87.70	0.70	0.01	0.9
YQ_022_003	MCD006693	87.70	88.70	1.00	0.01	0.8
YQ_022_003	MCD006694	88.70	93.65	4.95	0.02	2.2
YQ_022_003	MCD006695	93.65	94.90	1.25	0.03	1.4
YQ_022_003	MCD006696	94.90	95.85	0.95	0.12	11.1
YQ_022_003	MCD006697	95.85	96.95	1.10	0.11	6.4
YQ_022_003	MCD006698	96.95	97.95	1.00	0.03	2.4
YQ_022_003	MCD006699	105.00	105.70	0.70	0.01	1.3
YQ_022_003	MCD006701	105.70	105.90	0.20	0.07	6.5
YQ_022_003	MCD006702	105.90	107.60	1.70	0.02	1.0
YQ_022_003	MCD006703	107.60	108.30	0.70	0.01	0.9
YQ_022_003	MCD006704	108.30	109.60	1.30	0.60	14.4
YQ_022_003	MCD006705	109.60	109.90	0.30	0.57	25.0
YQ_022_003	MCD006706	109.90	110.25	0.35	0.66	45.8
YQ_022_003	MCD006707	110.25	111.10	0.85	0.17	25.0
YQ_022_003	MCD006708	111.10	112.60	1.50	0.04	10.7
YQ_022_003	MCD006709	131.45	132.60	1.15	0.00	0.6
YQ_022_003	MCD006711	132.60	133.65	1.05	0.00	1.4
YQ_022_003	MCD006712	133.65	134.70	1.05	0.01	3.1
YQ_022_003	MCD006713	134.70	143.60	8.90	0.00	0.5
YQ_022_003	MCD006714	143.60	144.25	0.65	0.01	0.7
YQ_022_003	MCD006715	144.25	145.10	0.85	0.00	0.3
YQ_022_003	MCD006716	145.10	146.30	1.20	0.01	0.6
YQ_022_003	MCD006717	146.30	146.90	0.60	0.00	0.3
YQ_022_003	MCD006718	156.65	157.25	0.60	0.01	0.9

Yoquivo Gold-Silver Project - 2022 Drill Program - Assays

Hole ID	Sample ID	From (m)	To (m)	Interval (m)	Au (ppm)	Ag (ppm)
YQ_022_003	MCD006719	165.00	166.50	1.50	0.01	0.3
YQ_022_003	MCD006721	166.50	167.80	1.30	0.01	0.3
YQ_022_003	MCD006722	167.80	168.00	0.20	0.01	0.3
YQ_022_003	MCD006723	168.00	168.35	0.35	0.00	0.3
YQ_022_003	MCD006724	168.35	169.85	1.50	0.00	0.6
YQ_022_003	MCD006725	169.85	170.40	0.55	0.13	0.9
YQ_022_003	MCD006726	170.40	171.65	1.25	0.01	0.3
YQ_022_004	MCD006727	18.85	19.85	1.00	0.00	0.3
YQ_022_004	MCD006728	19.85	20.00	0.15	0.00	0.5
YQ_022_004	MCD006729	20.00	20.50	0.50	0.00	0.3
YQ_022_004	MCD006731	24.10	24.35	0.25	0.02	0.7
YQ_022_004	MCD006732	37.25	38.65	1.40	0.00	0.8
YQ_022_004	MCD006733	38.65	39.35	0.70	0.00	0.6
YQ_022_004	MCD006734	39.35	40.05	0.70	0.01	1.3
YQ_022_004	MCD006735	40.05	40.20	0.15	0.00	0.5
YQ_022_004	MCD006736	40.20	40.55	0.35	0.00	0.8
YQ_022_004	MCD006737	40.55	41.45	0.90	0.01	2.1
YQ_022_004	MCD006738	41.45	42.80	1.35	0.01	1.4
YQ_022_004	MCD006739	42.80	43.20	0.40	0.00	0.6
YQ_022_004	MCD006741	43.20	44.00	0.80	0.00	0.7
YQ_022_004	MCD006742	44.00	45.00	1.00	0.00	1.1
YQ_022_004	MCD006743	45.00	46.50	1.50	0.01	1.2
YQ_022_004	MCD006744	70.45	72.00	1.55	0.00	0.3
YQ_022_004	MCD006745	72.00	72.35	0.35	0.00	0.3
YQ_022_004	MCD006746	72.35	72.90	0.55	0.00	0.3
YQ_022_004	MCD006747	72.90	73.45	0.55	0.00	0.3
YQ_022_004	MCD006748	73.45	73.95	0.50	0.00	0.3
YQ_022_004	MCD006749	73.95	74.80	0.85	0.00	0.3
YQ_022_004	MCD006751	107.15	107.75	0.60	0.06	3.7
YQ_022_004	MCD006752	107.75	108.00	0.25	0.02	2.5
YQ_022_004	MCD006753	108.00	109.50	1.50	0.02	1.3
YQ_022_004	MCD006754	109.50	111.00	1.50	0.01	1.0
YQ_022_004	MCD006755	111.00	112.50	1.50	0.03	1.7
YQ_022_004	MCD006756	112.50	114.00	1.50	0.01	0.9
YQ_022_004	MCD006757	124.00	124.35	0.35	0.07	0.3
YQ_022_004	MCD006758	124.35	124.60	0.25	0.01	0.3
YQ_022_004	MCD006759	124.60	125.35	0.75	0.01	0.7
YQ_022_004	MCD006761	153.20	154.35	1.15	0.01	1.9
YQ_022_004	MCD006762	154.35	154.85	0.50	0.02	4.1
YQ_022_004	MCD006763	154.85	155.15	0.30	0.59	131.0
YQ_022_004	MCD006764	155.15	156.55	1.40	0.04	3.4
YQ_022_004	MCD006765	156.55	157.50	0.95	0.01	1.6
YQ_022_004	MCD006766	157.50	159.00	1.50	0.02	1.5
YQ_022_004	MCD006767	159.00	160.40	1.40	0.02	3.6
YQ_022_004	MCD006768	160.40	161.25	0.85	0.02	1.5
YQ_022_004	MCD006769	161.25	162.70	1.45	0.02	2.4
YQ_022_004	MCD006771	162.70	163.40	0.70	0.13	18.0
YQ_022_004	MCD006772	163.40	163.65	0.25	0.91	112.0
YQ_022_004	MCD006773	163.65	163.95	0.30	0.09	8.5
YQ_022_004	MCD006774	163.95	164.20	0.25	0.14	14.5
YQ_022_004	MCD006775	164.20	164.90	0.70	1.08	70.0
YQ_022_004	MCD006777	164.90	165.30	0.40	0.07	9.0
YQ_022_004	MCD006778	165.30	166.35	1.05	0.05	2.2

Yoquivo Gold-Silver Project - 2022 Drill Program - Assays

Hole ID	Sample ID	From (m)	To (m)	Interval (m)	Au (ppm)	Ag (ppm)
YQ_022_004	MCD006779	183.85	184.05	0.20	0.21	2.6
YQ_022_004	MCD006781	184.05	184.60	0.55	0.01	1.5
YQ_022_004	MCD006782	184.60	184.85	0.25	0.04	4.2
YQ_022_004	MCD006783	184.85	186.00	1.15	0.02	2.5
YQ_022_004	MCD006784	188.60	190.10	1.50	0.00	0.3
YQ_022_004	MCD006785	190.10	190.45	0.35	0.00	0.3
YQ_022_004	MCD006786	190.45	191.90	1.45	0.00	0.3
YQ_022_004	MCD006787	191.90	192.15	0.25	0.01	0.3
YQ_022_004	MCD006788	192.15	193.20	1.05	0.00	0.3
YQ_022_004	MCD006789	193.20	193.40	0.20	0.00	0.6
YQ_022_004	MCD006791	193.40	194.40	1.00	0.00	0.7
YQ_022_004	MCD006792	194.40	195.40	1.00	0.00	0.3
YQ_022_004	MCD006793	195.40	195.70	0.30	0.00	0.5
YQ_022_004	MCD006794	195.70	197.15	1.45	0.01	0.9
YQ_022_004	MCD006795	203.55	204.45	0.90	0.01	1.3
YQ_022_004	MCD006796	204.45	205.15	0.70	0.01	0.3
YQ_022_004	MCD006797	207.00	208.15	1.15	0.01	0.6
YQ_022_004	MCD006798	208.15	208.35	0.20	0.00	0.3
YQ_022_004	MCD006799	208.35	209.85	1.50	0.00	0.5
YQ_022_004	MCD006801	209.85	210.20	0.35	0.00	0.3
YQ_022_004	MCD006802	210.20	210.45	0.25	0.00	0.3
YQ_022_004	MCD006803	210.45	210.75	0.30	0.02	0.3
YQ_022_004	MCD006805	210.75	212.15	1.40	0.01	0.3
YQ_022_004	MCD006806	212.25	213.75	1.50	0.00	0.3
YQ_022_004	MCD006807	213.75	214.40	0.65	0.00	0.3
YQ_022_004	MCD006808	214.40	214.65	0.25	0.02	0.5
YQ_022_004	MCD006809	214.65	216.10	1.45	0.00	0.3
YQ_022_004	MCD006811	216.10	217.10	1.00	0.01	0.3
YQ_022_004	MCD006812	217.10	218.50	1.40	0.01	0.3
YQ_022_004	MCD006813	218.50	219.25	0.75	0.00	0.3
YQ_022_004	MCD006814	225.00	226.05	1.05	0.00	0.7
YQ_022_004	MCD006815	226.05	227.05	1.00	0.00	0.8
YQ_022_004	MCD006816	227.05	228.55	1.50	0.03	5.7
YQ_022_004	MCD006817	248.15	249.00	0.85	0.00	0.3
YQ_022_004	MCD006818	254.30	254.55	0.25	0.00	0.3
YQ_022_004	MCD006819	254.55	255.95	1.40	0.00	0.3
YQ_022_005	MCD007148	5.45	6.35	0.90	0.07	42.1
YQ_022_005	MCD007149	6.35	7.95	1.60	0.05	36.0
YQ_022_005	MCD007151	7.95	9.00	1.05	0.09	80.2
YQ_022_005	MCD007152	9.00	10.25	1.25	0.09	214.0
YQ_022_005	MCD007153	10.25	10.45	0.20	0.09	18.9
YQ_022_005	MCD007154	10.45	10.85	0.40	0.15	57.2
YQ_022_005	MCD007155	10.85	11.75	0.90	0.07	22.4
YQ_022_005	MCD007156	11.75	12.00	0.25	0.01	9.9
YQ_022_005	MCD007157	12.00	13.50	1.50	0.07	21.9
YQ_022_005	MCD007158	13.50	14.30	0.80	0.02	4.6
YQ_022_005	MCD006828	24.10	25.05	0.95	0.01	0.5
YQ_022_005	MCD006829	25.05	26.35	1.30	0.22	2.1
YQ_022_005	MCD006831	26.35	26.85	0.50	0.01	0.3
YQ_022_005	MCD006832	53.35	54.00	0.65	0.01	0.3
YQ_022_005	MCD006833	54.00	55.25	1.25	0.01	0.3
YQ_022_005	MCD006834	69.00	69.70	0.70	0.02	2.2
YQ_022_005	MCD006835	69.70	71.10	1.40	0.04	4.8

Yoquivo Gold-Silver Project - 2022 Drill Program - Assays

Hole ID	Sample ID	From (m)	To (m)	Interval (m)	Au (ppm)	Ag (ppm)
YQ_022_005	MCD006836	71.10	72.00	0.90	0.03	4.2
YQ_022_005	MCD006837	90.30	91.50	1.20	0.01	1.9
YQ_022_005	MCD006838	91.50	92.00	0.50	0.05	6.6
YQ_022_005	MCD006839	92.00	92.55	0.55	0.04	3.4
YQ_022_005	MCD006841	97.05	97.80	0.75	0.02	2.2
YQ_022_005	MCD006842	97.80	98.05	0.25	0.08	6.3
YQ_022_005	MCD006843	98.05	99.15	1.10	0.02	3.4
YQ_022_005	MCD006844	125.45	126.00	0.55	0.02	0.3
YQ_022_005	MCD006845	126.00	126.40	0.40	0.15	0.3
YQ_022_005	MCD006846	126.40	127.70	1.30	0.24	0.3
YQ_022_005	MCD006847	153.00	153.65	0.65	0.01	1.7
YQ_022_005	MCD006848	153.65	154.20	0.55	0.05	8.7
YQ_022_005	MCD006849	154.20	154.80	0.60	0.00	0.3
YQ_022_005	MCD006851	154.80	156.30	1.50	0.01	0.8
YQ_022_005	MCD006852	156.30	157.30	1.00	0.01	1.3
YQ_022_005	MCD006853	157.30	158.40	1.10	0.00	0.3
YQ_022_005	MCD006854	158.40	159.10	0.70	0.16	4.3
YQ_022_005	MCD006855	159.10	159.80	0.70	0.00	0.3
YQ_022_005	MCD006856	159.80	161.30	1.50	0.09	0.5
YQ_022_005	MCD006857	161.30	162.80	1.50	0.00	1.1
YQ_022_005	MCD006858	162.80	164.30	1.50	0.02	0.3
YQ_022_005	MCD006859	164.30	165.80	1.50	0.03	0.3
YQ_022_005	MCD006861	165.80	167.10	1.30	0.00	0.3
YQ_022_005	MCD006862	167.10	168.65	1.55	0.01	0.3
YQ_022_005	MCD006863	168.65	169.85	1.20	0.00	0.3
YQ_022_005	MCD006864	169.85	170.65	0.80	0.00	0.3
YQ_022_005	MCD006865	170.65	170.90	0.25	0.00	0.3
YQ_022_005	MCD006866	170.90	172.15	1.25	0.00	0.3
YQ_022_005	MCD006867	172.15	183.00	10.85	0.01	2.7
YQ_022_005	MCD006868	183.00	184.50	1.50	0.00	0.6
YQ_022_005	MCD006869	184.50	184.75	0.25	0.02	1.5
YQ_022_005	MCD006871	184.75	185.90	1.15	0.03	1.6
YQ_022_005	MCD006872	185.90	186.40	0.50	0.01	1.5
YQ_022_005	MCD006873	186.40	187.60	1.20	0.08	13.9
YQ_022_005	MCD006874	187.60	188.35	0.75	0.01	3.3
YQ_022_005	MCD006875	188.35	188.60	0.25	0.02	2.6
YQ_022_005	MCD006876	188.60	190.10	1.50	0.01	2.1
YQ_022_005	MCD006877	196.20	197.70	1.50	0.00	0.3
YQ_022_005	MCD006878	197.70	198.00	0.30	0.01	2.0
YQ_022_005	MCD006879	198.00	199.50	1.50	0.00	0.3
YQ_022_005	MCD006881	231.00	232.45	1.45	0.01	1.3
YQ_022_005	MCD006882	232.45	232.75	0.30	1.59	368.0
YQ_022_005	MCD006883	232.75	233.05	0.30	0.02	5.5
YQ_022_005	MCD006884	233.05	233.25	0.20	0.36	161.0
YQ_022_005	MCD006885	233.25	234.30	1.05	0.01	3.1
YQ_022_005	MCD006886	234.30	235.30	1.00	0.01	2.9
YQ_022_005	MCD006887	235.30	235.75	0.45	0.03	8.0
YQ_022_005	MCD006889	235.75	236.05	0.30	0.22	46.6
YQ_022_005	MCD006891	236.05	237.50	1.45	0.01	1.4
YQ_022_005	MCD006892	237.50	239.10	1.60	0.00	1.0
YQ_022_005	MCD006893	239.10	240.35	1.25	0.00	1.4
YQ_022_005	MCD006894	240.35	241.90	1.55	0.00	1.2
YQ_022_005	MCD006895	241.90	242.80	0.90	0.00	2.6

Yoquivo Gold-Silver Project - 2022 Drill Program - Assays

Hole ID	Sample ID	From (m)	To (m)	Interval (m)	Au (ppm)	Ag (ppm)
YQ_022_005	MCD006896	242.80	244.30	1.50	0.01	2.3
YQ_022_005	MCD006897	244.30	244.85	0.55	0.01	3.5
YQ_022_005	MCD006898	244.85	246.35	1.50	0.01	1.4
YQ_022_005	MCD006899	246.35	247.80	1.45	0.01	1.9
YQ_022_005	MCD006901	247.80	249.00	1.20	0.01	1.1
YQ_022_005	MCD006902	249.00	250.10	1.10	0.00	0.3
YQ_022_005	MCD006903	250.10	251.50	1.40	0.00	0.3
YQ_022_005	MCD006904	251.50	252.00	0.50	0.00	0.3
YQ_022_005	MCD006905	252.00	253.50	1.50	0.04	0.3
YQ_022_005	MCD006906	253.50	254.90	1.40	0.00	0.3
YQ_022_005	MCD006907	254.90	255.95	1.05	0.00	1.1
YQ_022_005	MCD006908	255.95	256.45	0.50	0.00	0.3
YQ_022_005	MCD006909	256.45	257.80	1.35	0.00	0.9
YQ_022_006	MCD006911	6.60	7.95	1.35	0.04	289.0
YQ_022_006	MCD006912	7.95	9.10	1.15	0.03	60.7
YQ_022_006	MCD006913	9.10	10.05	0.95	0.35	294.0
YQ_022_006	MCD006914	10.05	10.80	0.75	0.35	298.0
YQ_022_006	MCD006915	10.80	12.00	1.20	0.22	62.2
YQ_022_006	MCD006916	12.00	13.50	1.50	1.53	35.6
YQ_022_006	MCD006917	13.50	14.75	1.25	0.02	97.0
YQ_022_006	MCD006918	23.60	24.55	0.95	0.00	0.5
YQ_022_006	MCD006919	24.55	24.80	0.25	0.01	0.3
YQ_022_006	MCD006921	24.80	26.25	1.45	0.00	0.3
YQ_022_006	MCD006922	26.25	27.75	1.50	0.00	0.3
YQ_022_006	MCD006923	27.75	29.15	1.40	0.36	37.6
YQ_022_006	MCD006924	29.15	30.65	1.50	0.00	0.3
YQ_022_006	MCD006925	30.65	32.15	1.50	0.00	0.3
YQ_022_006	MCD006926	32.15	33.40	1.25	0.00	0.3
YQ_022_006	MCD006927	33.40	34.65	1.25	0.01	0.8
YQ_022_006	MCD006928	34.65	36.00	1.35	0.00	0.3
YQ_022_006	MCD006929	36.00	37.50	1.50	0.00	0.3
YQ_022_006	MCD006931	57.00	58.15	1.15	0.00	0.6
YQ_022_006	MCD006932	58.15	58.40	0.25	0.01	1.4
YQ_022_006	MCD006933	58.40	58.65	0.25	0.02	1.4
YQ_022_006	MCD006934	58.85	60.00	1.15	0.00	0.6
YQ_022_006	MCD006935	60.00	61.50	1.50	0.00	0.3
YQ_022_006	MCD006936	61.50	62.85	1.35	0.05	2.1
YQ_022_006	MCD006937	62.85	63.00	0.15	0.48	58.3
YQ_022_006	MCD006938	63.00	64.45	1.45	0.00	0.8
YQ_022_006	MCD006939	75.00	75.80	0.80	0.00	0.3
YQ_022_006	MCD006941	75.80	76.25	0.45	0.00	0.3
YQ_022_006	MCD006942	76.25	77.75	1.50	0.00	0.3
YQ_022_006	MCD006943	82.70	84.15	1.45	0.01	0.8
YQ_022_006	MCD006944	84.15	84.60	0.45	0.00	0.3
YQ_022_006	MCD006945	84.60	85.95	1.35	0.00	0.7
YQ_022_006	MCD006946	85.95	86.65	0.70	0.00	0.8
YQ_022_006	MCD006947	86.65	87.20	0.55	0.02	3.9
YQ_022_006	MCD006948	87.20	87.75	0.55	0.02	3.5
YQ_022_006	MCD006949	87.75	87.95	0.20	0.01	2.0
YQ_022_006	MCD006951	87.95	89.45	1.50	0.02	2.6
YQ_022_006	MCD006952	89.45	90.90	1.45	0.01	1.0
YQ_022_006	MCD006953	90.90	91.40	0.50	0.01	0.7
YQ_022_006	MCD006954	91.40	92.80	1.40	0.01	1.3

Yoquivo Gold-Silver Project - 2022 Drill Program - Assays

Hole ID	Sample ID	From (m)	To (m)	Interval (m)	Au (ppm)	Ag (ppm)
YQ_022_006	MCD006955	92.80	94.30	1.50	0.00	0.5
YQ_022_006	MCD006956	99.90	101.40	1.50	0.03	0.3
YQ_022_006	MCD006957	101.40	102.90	1.50	0.01	0.3
YQ_022_006	MCD006958	102.90	104.45	1.55	0.00	0.3
YQ_022_006	MCD006959	104.45	105.95	1.50	0.01	0.3
YQ_022_006	MCD006961	105.95	107.45	1.50	0.04	1.2
YQ_022_006	MCD006962	119.90	121.40	1.50	0.01	0.3
YQ_022_006	MCD006963	121.40	122.85	1.45	0.00	0.3
YQ_022_006	MCD006964	122.85	124.30	1.45	0.00	0.5
YQ_022_006	MCD006965	124.30	125.80	1.50	0.00	0.5
YQ_022_006	MCD006966	125.80	127.25	1.45	0.00	0.3
YQ_022_006	MCD006967	127.25	128.75	1.50	0.00	0.3
YQ_022_006	MCD006968	128.75	129.45	0.70	0.00	0.3
YQ_022_006	MCD006969	137.35	138.25	0.90	0.00	0.3
YQ_022_006	MCD006971	138.25	139.75	1.50	0.00	0.3
YQ_022_006	MCD006972	139.75	141.00	1.25	0.00	0.3
YQ_022_006	MCD006973	141.00	141.40	0.40	0.02	0.3
YQ_022_006	MCD006974	142.40	143.90	1.50	0.59	7.7
YQ_022_006	MCD006975	150.10	151.50	1.40	0.01	0.3
YQ_022_006	MCD006976	151.50	153.00	1.50	0.00	0.3
YQ_022_006	MCD006977	153.00	153.35	0.35	0.01	0.3
YQ_022_006	MCD006978	153.35	154.85	1.50	0.00	0.3
YQ_022_006	MCD006979	154.85	155.95	1.10	0.00	0.3
YQ_022_006	MCD006981	155.95	156.50	0.55	0.00	0.3
YQ_022_006	MCD006982	156.50	157.50	1.00	0.00	0.3
YQ_022_006	MCD006983	164.55	165.40	0.85	0.00	0.3
YQ_022_006	MCD006984	165.40	166.40	1.00	0.00	0.3
YQ_022_006	MCD006985	166.44	167.85	1.41	0.00	0.3
YQ_022_006	MCD006986	167.85	168.90	1.05	0.00	0.3
YQ_022_006	MCD006987	171.90	173.40	1.50	0.01	0.3
YQ_022_006	MCD006988	173.40	174.90	1.50	0.01	1.0
YQ_022_006	MCD006989	174.90	176.20	1.30	0.09	5.7
YQ_022_006	MCD006991	176.20	177.70	1.50	0.00	1.3
YQ_022_006	MCD006992	177.70	178.90	1.20	0.01	1.1
YQ_022_006	MCD006993	178.90	179.90	1.00	0.02	1.9
YQ_022_006	MCD006994	179.90	180.40	0.50	0.08	14.6
YQ_022_006	MCD006995	180.40	181.35	0.95	0.02	2.9
YQ_022_006	MCD006996	181.35	182.25	0.90	0.00	0.8
YQ_022_006	MCD006997	186.00	187.15	1.15	0.00	0.3
YQ_022_006	MCD006998	187.15	188.66	1.51	0.00	0.3
YQ_022_006	MCD006999	191.00	192.25	1.25	0.00	0.3
YQ_022_006	MCD007001	192.25	193.25	1.00	0.01	1.3
YQ_022_006	MCD007002	193.25	193.45	0.20	0.18	34.7
YQ_022_006	MCD007003	193.45	194.00	0.55	0.01	3.1
YQ_022_006	MCD007004	194.00	194.20	0.20	0.82	128.0
YQ_022_006	MCD007006	194.20	195.20	1.00	0.01	2.9
YQ_022_006	MCD007007	195.20	196.35	1.15	0.01	1.5
YQ_022_006	MCD007008	196.35	196.75	0.40	0.01	2.9
YQ_022_006	MCD007009	196.75	197.95	1.20	0.00	0.6
YQ_022_006	MCD007011	197.95	198.95	1.00	0.01	2.1
YQ_022_006	MCD007012	198.95	199.15	0.20	2.43	549.0
YQ_022_006	MCD007014	199.15	200.25	1.10	0.21	123.0
YQ_022_006	MCD007015	200.25	201.35	1.10	0.04	18.9

Yoquivo Gold-Silver Project - 2022 Drill Program - Assays

Hole ID	Sample ID	From (m)	To (m)	Interval (m)	Au (ppm)	Ag (ppm)
YQ_022_006	MCD007016	201.35	202.55	1.20	0.00	2.3
YQ_022_006	MCD007017	202.55	203.90	1.35	0.00	2.7
YQ_022_006	MCD007018	203.90	205.40	1.50	0.00	2.7
YQ_022_006	MCD007019	213.55	215.05	1.50	0.00	0.3
YQ_022_006	MCD007021	215.05	216.55	1.50	0.00	0.5
YQ_022_006	MCD007022	216.55	218.05	1.50	0.00	0.3
YQ_022_006	MCD007023	218.05	219.55	1.50	0.00	0.3
YQ_022_006	MCD007024	219.55	221.05	1.50	0.01	1.2
YQ_022_006	MCD007025	221.05	222.55	1.50	0.00	1.1
YQ_022_006	MCD007026	222.55	223.60	1.05	0.00	0.3
YQ_022_006	MCD007027	223.60	224.60	1.00	0.00	1.5
YQ_022_006	MCD007028	224.60	225.30	0.70	0.06	8.0
YQ_022_006	MCD007029	225.30	225.70	0.40	0.06	11.9
YQ_022_006	MCD007031	229.45	230.45	1.00	0.00	1.0
YQ_022_006	MCD007032	230.45	230.65	0.20	0.01	1.5
YQ_022_006	MCD007033	230.65	231.60	0.95	0.00	0.3
YQ_022_006	MCD007034	231.60	232.80	1.20	0.00	1.2
YQ_022_006	MCD007035	232.80	234.00	1.20	0.00	0.3
YQ_022_006	MCD007036	234.00	235.20	1.20	0.00	0.3
YQ_022_006	MCD007037	235.20	236.50	1.30	0.00	0.3
YQ_022_006	MCD007038	236.50	237.50	1.00	0.01	3.0
YQ_022_006	MCD007039	237.50	239.00	1.50	0.00	0.3
YQ_022_006	MCD007041	252.00	253.45	1.45	0.02	1.5
YQ_022_006	MCD007042	253.45	253.70	0.25	0.05	3.2
YQ_022_006	MCD007044	253.70	255.00	1.30	0.00	0.3
YQ_022_006	MCD007045	255.00	256.55	1.55	0.00	0.3
YQ_022_006	MCD007046	256.55	257.45	0.90	0.00	0.5
YQ_022_007	MCD007047	3.30	4.80	1.50	0.00	0.3
YQ_022_007	MCD007048	4.80	5.10	0.30	0.01	0.3
YQ_022_007	MCD007049	5.10	5.85	0.75	0.00	0.3
YQ_022_007	MCD007051	5.85	6.80	0.95	0.00	0.3
YQ_022_007	MCD007052	6.80	7.65	0.85	0.00	0.3
YQ_022_007	MCD007053	7.65	8.40	0.75	0.00	0.3
YQ_022_007	MCD007054	8.40	8.75	0.35	0.00	0.3
YQ_022_007	MCD007055	8.75	9.00	0.25	0.00	0.3
YQ_022_007	MCD007056	12.85	13.15	0.30	0.00	0.3
YQ_022_007	MCD007057	13.15	13.75	0.60	0.00	0.3
YQ_022_007	MCD007058	13.75	14.65	0.90	0.00	0.3
YQ_022_007	MCD007059	16.75	17.35	0.60	0.00	0.3
YQ_022_007	MCD007061	17.35	18.85	1.50	0.00	8.0
YQ_022_007	MCD007062	18.85	20.20	1.35	0.00	9.4
YQ_022_007	MCD007063	20.20	21.00	0.80	0.00	2.5
YQ_022_007	MCD007064	21.00	21.70	0.70	0.00	1.5
YQ_022_007	MCD007065	28.40	29.80	1.40	0.01	0.3
YQ_022_007	MCD007066	29.80	30.10	0.30	0.01	0.3
YQ_022_007	MCD007067	30.10	30.75	0.65	0.00	0.3
YQ_022_007	MCD007068	30.75	32.15	1.40	0.06	0.3
YQ_022_007	MCD007069	32.15	32.35	0.20	0.01	0.3
YQ_022_007	MCD007071	32.35	32.80	0.45	0.01	0.8
YQ_022_007	MCD007072	40.00	40.30	0.30	0.01	0.8
YQ_022_007	MCD007073	40.30	40.50	0.20	0.00	0.6
YQ_022_007	MCD007074	40.50	40.85	0.35	0.00	1.3
YQ_022_007	MCD007075	44.70	46.20	1.50	0.00	0.8

Yoquivo Gold-Silver Project - 2022 Drill Program - Assays

Hole ID	Sample ID	From (m)	To (m)	Interval (m)	Au (ppm)	Ag (ppm)
YQ_022_007	MCD007076	46.20	46.55	0.35	0.02	0.3
YQ_022_007	MCD007077	46.55	47.90	1.35	0.02	1.1
YQ_022_007	MCD007078	47.90	49.38	1.48	0.01	0.9
YQ_022_007	MCD007079	49.38	50.75	1.37	0.04	0.3
YQ_022_007	MCD007081	50.75	51.35	0.60	0.24	0.3
YQ_022_007	MCD007082	51.35	51.50	0.15	0.00	0.3
YQ_022_007	MCD007083	51.50	52.10	0.60	0.00	0.3
YQ_022_007	MCD007084	52.10	52.50	0.40	0.00	0.3
YQ_022_007	MCD007085	52.50	54.00	1.50	0.00	0.3
YQ_022_007	MCD007086	54.00	55.30	1.30	0.01	1.2
YQ_022_007	MCD007087	55.30	56.80	1.50	0.00	0.3
YQ_022_007	MCD007088	56.80	58.20	1.40	0.00	0.5
YQ_022_007	MCD007089	58.20	59.25	1.05	0.00	0.6
YQ_022_007	MCD007091	59.25	59.40	0.15	0.01	1.1
YQ_022_007	MCD007092	59.40	59.75	0.35	0.00	1.4
YQ_022_007	MCD007093	59.77	60.55	0.78	0.00	0.3
YQ_022_007	MCD007094	64.30	64.60	0.30	0.00	0.3
YQ_022_007	MCD007095	64.60	64.80	0.20	0.01	0.3
YQ_022_007	MCD007096	66.80	68.40	1.60	0.00	0.7
YQ_022_007	MCD007097	68.40	69.10	0.70	0.01	2.0
YQ_022_007	MCD007098	69.10	70.60	1.50	0.12	3.7
YQ_022_007	MCD007099	70.60	70.80	0.20	16.90	57.2
YQ_022_007	MCD007101	70.80	72.25	1.45	0.04	6.2
YQ_022_007	MCD007102	72.25	72.75	0.50	0.25	1.4
YQ_022_007	MCD007103	72.75	73.05	0.30	0.01	0.3
YQ_022_007	MCD007104	73.05	74.35	1.30	0.01	0.3
YQ_022_007	MCD007105	75.85	76.10	0.25	0.01	0.3
YQ_022_007	MCD007106	76.10	77.00	0.90	0.01	0.5
YQ_022_007	MCD007107	77.00	78.00	1.00	0.00	0.3
YQ_022_007	MCD007108	78.00	78.90	0.90	0.00	0.5
YQ_022_007	MCD007109	78.90	80.20	1.30	0.00	0.3
YQ_022_007	MCD007111	80.20	81.25	1.05	0.17	0.3
YQ_022_007	MCD007112	81.25	82.55	1.30	0.08	0.9
YQ_022_007	MCD007113	82.55	84.00	1.45	0.01	1.0
YQ_022_007	MCD007114	84.00	85.10	1.10	0.01	3.1
YQ_022_007	MCD007115	85.10	85.55	0.45	0.01	2.2
YQ_022_007	MCD007116	85.55	85.95	0.40	0.01	4.5
YQ_022_007	MCD007117	85.95	86.15	0.20	0.00	4.7
YQ_022_007	MCD007118	86.15	86.60	0.45	0.00	1.4
YQ_022_007	MCD007119	86.60	87.70	1.10	0.01	1.6
YQ_022_007	MCD007121	87.70	87.90	0.20	0.01	3.3
YQ_022_007	MCD007122	87.90	88.20	0.30	0.01	4.1
YQ_022_007	MCD007123	88.20	88.40	0.20	0.00	6.5
YQ_022_007	MCD007124	88.40	88.75	0.35	0.01	7.4
YQ_022_007	MCD007125	88.75	90.00	1.25	0.00	0.6
YQ_022_007	MCD007126	101.40	102.45	1.05	0.02	0.3
YQ_022_007	MCD007127	102.45	103.35	0.90	0.02	0.3
YQ_022_007	MCD007128	103.35	104.15	0.80	0.01	0.8
YQ_022_007	MCD007129	104.15	105.20	1.05	0.01	0.3
YQ_022_007	MCD007131	105.20	106.30	1.10	0.01	0.5
YQ_022_007	MCD007132	106.30	106.80	0.50	0.01	0.3
YQ_022_007	MCD007133	106.80	108.00	1.20	0.01	0.3
YQ_022_007	MCD007134	108.00	108.60	0.60	0.01	0.3

Yoquivo Gold-Silver Project - 2022 Drill Program - Assays

Hole ID	Sample ID	From (m)	To (m)	Interval (m)	Au (ppm)	Ag (ppm)
YQ_022_007	MCD007135	108.60	109.05	0.45	0.01	0.6
YQ_022_007	MCD007136	112.50	112.80	0.30	0.02	3.0
YQ_022_007	MCD007137	112.80	113.10	0.30	0.01	1.3
YQ_022_007	MCD007138	113.10	114.00	0.90	0.02	3.6
YQ_022_007	MCD007139	155.00	155.45	0.45	0.01	1.0
YQ_022_007	MCD007141	155.45	155.80	0.35	0.01	0.3
YQ_022_007	MCD007142	155.80	156.30	0.50	0.00	0.3
YQ_022_007	MCD007143	163.50	163.90	0.40	0.02	2.3
YQ_022_007	MCD007144	163.90	164.40	0.50	0.04	4.5
YQ_022_007	MCD007145	164.40	165.00	0.60	0.02	1.0
YQ_022_007	MCD007146	171.50	171.80	0.30	0.00	0.3
YQ_022_007	MCD007147	171.80	172.55	0.75	0.01	0.3
YQ_022_008	MCD007159	11.00	11.50	0.50	0.00	0.5
YQ_022_008	MCD007161	11.50	12.70	1.20	0.00	1.8
YQ_022_008	MCD007162	12.70	13.65	0.95	0.00	0.9
YQ_022_008	MCD007163	13.65	14.60	0.95	0.00	1.4
YQ_022_008	MCD007164	14.60	15.30	0.70	0.02	2.1
YQ_022_008	MCD007165	28.60	29.30	0.70	0.13	8.9
YQ_022_008	MCD007166	44.90	45.95	1.05	0.15	13.2
YQ_022_008	MCD007167	45.95	47.15	1.20	0.04	4.5
YQ_022_008	MCD007168	47.15	47.90	0.75	0.20	128.0
YQ_022_008	MCD007169	47.90	48.50	0.60	0.04	12.0
YQ_022_008	MCD007171	66.35	67.80	1.45	0.07	14.1
YQ_022_008	MCD007172	67.80	69.00	1.20	0.17	19.9
YQ_022_008	MCD007173	69.00	69.20	0.20	0.47	72.2
YQ_022_008	MCD007174	69.20	70.00	0.80	0.01	0.8
YQ_022_008	MCD007175	70.00	70.70	0.70	0.03	2.2
YQ_022_008	MCD007176	74.90	75.90	1.00	0.01	0.6
YQ_022_008	MCD007177	75.90	76.10	0.20	0.23	22.0
YQ_022_008	MCD007178	76.10	76.90	0.80	0.04	10.1
YQ_022_008	MCD007179	76.90	78.00	1.10	0.60	37.6
YQ_022_008	MCD007181	78.00	78.20	0.20	0.28	37.3
YQ_022_008	MCD007182	78.20	79.60	1.40	0.01	1.2
YQ_022_008	MCD007183	96.00	97.15	1.15	0.00	0.3
YQ_022_008	MCD007184	97.15	98.05	0.90	0.02	2.6
YQ_022_008	MCD007185	98.05	99.00	0.95	0.01	2.0
YQ_022_008	MCD007186	99.00	100.20	1.20	0.00	0.3
YQ_022_008	MCD007187	100.20	101.35	1.15	0.01	1.0
YQ_022_008	MCD007188	101.35	102.05	0.70	0.01	1.1
YQ_022_008	MCD007189	102.05	102.60	0.55	0.01	1.3
YQ_022_008	MCD007191	102.60	104.00	1.40	0.01	0.7
YQ_022_008	MCD007192	107.55	108.60	1.05	0.02	0.5
YQ_022_008	MCD007193	108.60	109.90	1.30	0.01	0.3
YQ_022_008	MCD007194	109.90	110.60	0.70	0.01	2.0
YQ_022_008	MCD007195	110.60	111.65	1.05	0.01	1.0
YQ_022_008	MCD007196	120.40	121.70	1.30	0.01	1.8
YQ_022_008	MCD007197	121.70	122.10	0.40	0.05	4.5
YQ_022_008	MCD007198	122.10	123.00	0.90	0.01	1.7
YQ_022_008	MCD007199	123.00	123.95	0.95	0.02	2.5
YQ_022_008	MCD007201	123.95	125.25	1.30	0.03	5.4
YQ_022_008	MCD007202	125.25	126.00	0.75	0.01	1.5
YQ_022_008	MCD007203	141.50	141.90	0.40	30.80	5260.0
YQ_022_008	MCD007204	153.20	154.40	1.20	0.63	128.0

Yoquivo Gold-Silver Project - 2022 Drill Program - Assays

Hole ID	Sample ID	From (m)	To (m)	Interval (m)	Au (ppm)	Ag (ppm)
YQ_022_008	MCD007205	154.40	155.55	1.15	0.08	6.5
YQ_022_008	MCD007206	155.55	156.00	0.45	1.11	75.5
YQ_022_008	MCD007207	156.00	157.30	1.30	0.37	175.0
YQ_022_009	MCD007208	10.70	11.40	0.70	0.00	2.1
YQ_022_009	MCD007209	11.40	12.20	0.80	0.02	4.2
YQ_022_009	MCD007211	12.20	13.30	1.10	0.00	0.5
YQ_022_009	MCD007212	13.30	13.90	0.60	0.00	1.0
YQ_022_009	MCD007213	13.90	15.00	1.10	0.00	1.4
YQ_022_009	MCD007214	15.00	15.80	0.80	0.00	0.6
YQ_022_009	MCD007215	15.80	16.65	0.85	0.00	0.3
YQ_022_009	MCD007216	16.65	17.70	1.05	0.00	0.3
YQ_022_009	MCD007217	17.70	18.20	0.50	0.00	0.3
YQ_022_009	MCD007218	18.20	18.45	0.25	0.00	0.3
YQ_022_009	MCD007219	18.45	19.10	0.65	0.00	0.3
YQ_022_009	MCD007221	31.55	32.70	1.15	0.00	0.3
YQ_022_009	MCD007222	53.20	54.45	1.25	0.01	0.3
YQ_022_009	MCD007223	54.45	55.95	1.50	0.00	0.3
YQ_022_009	MCD007224	55.95	57.00	1.05	0.00	0.3
YQ_022_009	MCD007225	57.00	58.40	1.40	0.00	0.3
YQ_022_009	MCD007226	58.40	59.80	1.40	0.00	0.9
YQ_022_009	MCD007227	59.80	61.20	1.40	0.00	0.7
YQ_022_009	MCD007228	61.20	62.30	1.10	0.00	0.6
YQ_022_009	MCD007229	62.30	63.20	0.90	0.00	0.3
YQ_022_009	MCD007231	70.95	72.40	1.45	0.01	1.1
YQ_022_009	MCD007232	72.40	73.35	0.95	0.00	0.3
YQ_022_009	MCD007233	73.35	74.70	1.35	0.02	1.9
YQ_022_009	MCD007234	74.70	75.75	1.05	0.02	2.5
YQ_022_009	MCD007235	75.75	76.25	0.50	0.03	1.7
YQ_022_009	MCD007236	76.25	77.25	1.00	0.01	0.7
YQ_022_009	MCD007237	77.25	78.00	0.75	0.01	0.3
YQ_022_009	MCD007238	78.00	79.20	1.20	0.00	0.3
YQ_022_009	MCD007239	79.20	80.40	1.20	0.01	0.3
YQ_022_009	MCD007241	80.40	81.55	1.15	0.00	0.3
YQ_022_009	MCD007242	81.55	82.15	0.60	0.00	0.5
YQ_022_009	MCD007243	82.15	83.20	1.05	0.00	1.1
YQ_022_009	MCD007244	83.20	84.30	1.10	0.03	5.6
YQ_022_009	MCD007245	84.30	85.45	1.15	0.02	3.3
YQ_022_009	MCD007246	85.45	86.50	1.05	0.01	1.4
YQ_022_009	MCD007247	86.60	87.95	1.35	0.01	2.2
YQ_022_009	MCD007248	87.95	89.25	1.30	0.05	7.6
YQ_022_009	MCD007249	98.60	99.90	1.30	0.02	2.9
YQ_022_009	MCD007251	99.90	101.25	1.35	0.01	2.2
YQ_022_009	MCD007252	101.25	101.60	0.35	0.06	9.0
YQ_022_009	MCD007254	101.60	103.00	1.40	0.00	1.3
YQ_022_009	MCD007255	103.00	104.35	1.35	0.01	3.1
YQ_022_009	MCD007256	104.35	105.65	1.30	0.04	5.6
YQ_022_009	MCD007257	105.65	106.80	1.15	0.01	0.6
YQ_022_009	MCD007258	113.00	114.00	1.00	0.03	6.1
YQ_022_009	MCD007259	114.00	114.80	0.80	0.01	2.6
YQ_022_009	MCD007261	114.80	116.20	1.40	0.02	4.1
YQ_022_009	MCD007262	116.20	117.45	1.25	0.04	7.8
YQ_022_009	MCD007263	117.45	118.00	0.55	0.03	5.2
YQ_022_009	MCD007264	118.00	118.55	0.55	0.03	4.3

Yoquivo Gold-Silver Project - 2022 Drill Program - Assays

Hole ID	Sample ID	From (m)	To (m)	Interval (m)	Au (ppm)	Ag (ppm)
YQ_022_009	MCD007265	118.55	119.00	0.45	0.22	34.5
YQ_022_009	MCD007266	119.00	119.45	0.45	0.41	15.4
YQ_022_009	MCD007268	119.45	120.90	1.45	0.02	2.8
YQ_022_009	MCD007269	120.90	121.95	1.05	0.03	4.0
YQ_022_009	MCD007271	121.95	123.10	1.15	0.08	15.7
YQ_022_009	MCD007272	123.10	124.30	1.20	0.10	17.9
YQ_022_009	MCD007273	124.30	125.70	1.40	0.10	22.9
YQ_022_009	MCD007274	125.70	126.45	0.75	0.08	17.0
YQ_022_009	MCD007275	126.45	127.55	1.10	0.04	6.0
YQ_022_009	MCD007276	127.55	128.70	1.15	0.02	4.9
YQ_022_009	MCD007277	128.70	129.00	0.30	0.51	1735.0
YQ_022_009	MCD007278	129.00	130.40	1.40	0.05	58.8
YQ_022_009	MCD007279	130.40	131.90	1.50	0.02	11.0
YQ_022_009	MCD007281	131.90	133.10	1.20	0.02	6.6
YQ_022_009	MCD007282	133.10	133.70	0.60	0.61	178.0
YQ_022_009	MCD007283	133.70	134.30	0.60	0.12	37.3
YQ_022_009	MCD007284	134.30	135.30	1.00	0.28	75.7
YQ_022_009	MCD007285	135.30	136.00	0.70	0.11	12.9
YQ_022_009	MCD007286	136.00	137.55	1.55	0.34	80.0
YQ_022_009	MCD007287	137.55	138.60	1.05	0.16	25.0
YQ_022_009	MCD007288	138.60	139.50	0.90	0.04	7.9
YQ_022_009	MCD007289	139.50	140.40	0.90	0.01	4.2
YQ_022_009	MCD007291	140.40	141.40	1.00	0.01	2.5
YQ_022_009	MCD007292	150.00	151.00	1.00	0.00	0.5
YQ_022_009	MCD007293	151.00	152.50	1.50	0.00	0.7
YQ_022_009	MCD007294	152.50	153.70	1.20	0.00	0.3
YQ_022_009	MCD007295	179.40	180.35	0.95	0.09	10.4
YQ_022_009	MCD007296	180.35	180.95	0.60	0.24	20.2
YQ_022_009	MCD007297	180.95	181.60	0.65	0.01	0.8
YQ_022_009	MCD007298	181.60	182.60	1.00	0.11	6.6
YQ_022_009	MCD007299	191.80	193.00	1.20	0.11	13.7
YQ_022_009	MCD007301	193.00	193.20	0.20	0.25	29.8
YQ_022_009	MCD007302	193.20	194.60	1.40	0.05	7.8
YQ_022_009	MCD007303	211.70	213.00	1.30	0.06	6.7
YQ_022_009	MCD007304	213.00	214.50	1.50	0.13	10.6
YQ_022_009	MCD007305	214.50	215.05	0.55	0.02	6.1
YQ_022_009	MCD007306	215.05	216.10	1.05	0.10	9.7
YQ_022_009	MCD007307	216.10	217.25	1.15	0.04	3.7
YQ_022_009	MCD007308	223.70	224.80	1.10	0.12	14.7
YQ_022_009	MCD007309	224.80	225.90	1.10	0.14	5.9
YQ_022_009	MCD007311	225.90	227.00	1.10	1.01	159.0
YQ_022_009	MCD007312	227.00	227.45	0.45	1.16	212.0
YQ_022_009	MCD007313	227.45	228.10	0.65	0.10	16.9
YQ_022_009	MCD007314	228.10	229.25	1.15	0.49	59.1
YQ_022_009	MCD007315	229.25	230.10	0.85	0.41	44.8
YQ_022_009	MCD007316	230.10	230.40	0.30	0.14	21.8
YQ_022_009	MCD007317	230.40	231.00	0.60	0.13	22.0
YQ_022_009	MCD007318	231.00	231.90	0.90	0.39	82.1
YQ_022_009	MCD007319	231.90	232.75	0.85	0.78	131.0
YQ_022_009	MCD007321	232.75	233.25	0.50	0.21	75.0
YQ_022_009	MCD007322	233.25	234.10	0.85	0.58	160.0
YQ_022_009	MCD007323	234.10	235.15	1.05	0.78	141.0
YQ_022_009	MCD007324	235.15	236.40	1.25	0.61	116.0

Yoquivo Gold-Silver Project - 2022 Drill Program - Assays

Hole ID	Sample ID	From (m)	To (m)	Interval (m)	Au (ppm)	Ag (ppm)
YQ_022_009	MCD007325	236.40	237.40	1.00	0.85	141.0
YQ_022_009	MCD007326	237.40	238.95	1.55	0.20	30.3
YQ_022_009	MCD007327	238.95	239.60	0.65	0.66	83.6
YQ_022_009	MCD007328	239.60	240.00	0.40	0.40	82.6
YQ_022_009	MCD007329	240.00	240.85	0.85	0.77	170.0
YQ_022_009	MCD007331	240.85	242.25	1.40	0.25	41.4
YQ_022_009	MCD007332	242.25	243.05	0.80	0.12	22.2
YQ_022_009	MCD007333	243.05	244.00	0.95	0.19	24.7
YQ_022_009	MCD007334	244.00	244.70	0.70	0.09	10.5
YQ_022_009	MCD007335	244.70	245.35	0.65	0.03	2.2
YQ_022_009	MCD007336	245.35	245.90	0.55	0.01	1.1
YQ_022_009	MCD007337	245.90	246.45	0.55	0.01	0.7
YQ_022_009	MCD007338	246.45	247.00	0.55	0.01	2.6
YQ_022_009	MCD007339	247.00	247.60	0.60	0.07	10.3
YQ_022_009	MCD007341	247.60	248.20	0.60	0.14	23.9
YQ_022_009	MCD007342	248.20	249.65	1.45	0.02	4.2
YQ_022_009	MCD007343	249.65	250.35	0.70	0.06	5.9
YQ_022_009	MCD007344	250.35	251.35	1.00	0.01	0.7
YQ_022_009	MCD007345	251.35	252.50	1.15	0.01	2.1
YQ_022_009	MCD007346	252.50	253.45	0.95	0.14	13.2
YQ_022_009	MCD007347	253.45	254.00	0.55	0.40	33.7
YQ_022_009	MCD007348	254.00	255.30	1.30	0.23	33.7
YQ_022_009	MCD007349	255.30	256.70	1.40	0.36	1.5
YQ_022_009	MCD007351	256.70	258.00	1.30	0.01	3.4
YQ_022_009	MCD007352	258.00	258.90	0.90	0.02	3.8
YQ_022_009	MCD007353	258.90	259.30	0.40	0.03	4.0
YQ_022_009	MCD007354	259.30	259.90	0.60	0.31	10.4
YQ_022_009	MCD007355	259.90	260.25	0.35	0.06	6.5
YQ_022_009	MCD007356	260.25	261.60	1.35	0.08	9.9
YQ_022_009	MCD007357	261.60	262.65	1.05	0.44	46.9
YQ_022_009	MCD007358	262.65	263.45	0.80	0.56	52.9
YQ_022_009	MCD007359	263.45	264.40	0.95	4.84	174.0
YQ_022_009	MCD007361	264.40	265.70	1.30	0.37	35.2
YQ_022_009	MCD007362	265.70	266.25	0.55	0.56	76.9
YQ_022_009	MCD007363	266.25	267.00	0.75	0.78	98.4
YQ_022_009	MCD007364	267.00	268.30	1.30	0.36	43.1
YQ_022_009	MCD007365	268.30	269.05	0.75	0.36	35.1
YQ_022_009	MCD007366	269.05	270.00	0.95	0.78	104.0
YQ_022_009	MCD007367	270.00	271.20	1.20	0.30	42.2
YQ_022_009	MCD007368	271.20	272.65	1.45	0.84	109.0
YQ_022_009	MCD007369	272.65	274.00	1.35	0.21	12.4
YQ_022_009	MCD007371	274.00	275.05	1.05	0.23	26.2
YQ_022_009	MCD007372	275.05	276.00	0.95	0.11	5.2
YQ_022_009	MCD007373	276.00	276.75	0.75	0.40	33.7
YQ_022_009	MCD007374	276.75	277.70	0.95	1.40	24.7
YQ_022_009	MCD007375	277.70	278.45	0.75	0.82	92.6
YQ_022_009	MCD007376	278.45	279.55	1.10	0.50	60.9
YQ_022_009	MCD007377	279.55	280.50	0.95	0.73	95.0
YQ_022_009	MCD007378	280.50	281.25	0.75	0.87	77.0
YQ_022_009	MCD007379	281.25	282.00	0.75	1.44	165.0
YQ_022_009	MCD007381	282.00	283.45	1.45	1.24	150.0
YQ_022_009	MCD007382	283.45	284.60	1.15	1.96	159.0
YQ_022_009	MCD007383	284.60	285.90	1.30	8.28	149.0

Yoquivo Gold-Silver Project - 2022 Drill Program - Assays

Hole ID	Sample ID	From (m)	To (m)	Interval (m)	Au (ppm)	Ag (ppm)
YQ_022_009	MCD007384	285.90	286.80	0.90	13.00	124.0
YQ_022_009	MCD007385	286.80	288.00	1.20	4.11	75.7
YQ_022_009	MCD007386	288.00	289.45	1.45	1.40	97.0
YQ_022_009	MCD007387	289.45	290.70	1.25	2.09	58.3
YQ_022_009	MCD007388	290.70	291.25	0.55	0.01	3.0
YQ_022_009	MCD007389	291.25	292.15	0.90	0.14	23.6
YQ_022_009	MCD007391	292.15	293.65	1.50	0.25	99.1
YQ_022_009	MCD007392	293.65	295.00	1.35	1.64	143.0
YQ_022_009	MCD007393	295.00	296.45	1.45	0.91	116.0
YQ_022_009	MCD007394	296.45	297.95	1.50	0.16	50.6
YQ_022_009	MCD007395	297.95	298.80	0.85	0.14	39.8
YQ_022_009	MCD007396	298.80	299.75	0.95	0.42	95.1
YQ_022_009	MCD007397	299.75	300.85	1.10	1.03	119.0
YQ_022_009	MCD007398	300.85	301.90	1.05	0.40	57.1
YQ_022_009	MCD007399	301.90	302.75	0.85	0.12	12.8
YQ_022_009	MCD007401	302.75	303.20	0.45	0.10	28.8
YQ_022_009	MCD007402	303.20	304.65	1.45	0.26	73.6
YQ_022_009	MCD007403	304.65	306.00	1.35	1.31	43.8
YQ_022_010	MCD007404	9.80	11.10	1.30	0.00	0.3
YQ_022_010	MCD007405	11.10	11.70	0.60	0.00	0.3
YQ_022_010	MCD007406	11.70	12.10	0.40	0.00	0.3
YQ_022_010	MCD007407	34.85	36.40	1.55	0.00	0.3
YQ_022_010	MCD007408	36.40	36.80	0.40	0.00	0.3
YQ_022_010	MCD007409	36.80	37.95	1.15	0.00	0.3
YQ_022_010	MCD007411	108.20	109.35	1.15	0.00	0.6
YQ_022_010	MCD007412	109.35	110.55	1.20	0.06	13.5
YQ_022_010	MCD007413	110.55	112.00	1.45	0.11	18.6
YQ_022_010	MCD007414	112.00	113.10	1.10	0.29	52.1
YQ_022_010	MCD007415	113.10	114.10	1.00	0.04	7.5
YQ_022_010	MCD007416	114.10	115.15	1.05	0.05	8.4
YQ_022_010	MCD007417	115.15	116.00	0.85	0.04	8.1
YQ_022_010	MCD007418	116.00	117.00	1.00	0.02	3.4
YQ_022_010	MCD007419	117.00	117.60	0.60	0.02	3.4
YQ_022_010	MCD007421	117.60	118.90	1.30	0.03	3.9
YQ_022_010	MCD007422	122.55	123.70	1.15	0.00	0.3
YQ_022_010	MCD007423	123.70	124.80	1.10	0.01	0.8
YQ_022_010	MCD007424	124.80	125.35	0.55	1.89	31.0
YQ_022_010	MCD007425	125.35	125.90	0.55	0.13	11.5
YQ_022_010	MCD007426	125.90	126.40	0.50	0.12	7.9
YQ_022_010	MCD007427	126.40	126.90	0.50	0.20	6.6
YQ_022_010	MCD007429	126.90	128.10	1.20	0.04	5.2
YQ_022_010	MCD007431	128.10	129.15	1.05	0.27	16.8
YQ_022_010	MCD007432	129.15	129.90	0.75	0.09	12.6
YQ_022_010	MCD007433	129.90	131.25	1.35	0.08	12.6
YQ_022_010	MCD007434	131.25	132.00	0.75	0.17	21.4
YQ_022_010	MCD007435	132.00	132.70	0.70	0.10	11.9
YQ_022_010	MCD007436	132.70	133.55	0.85	0.03	6.3
YQ_022_010	MCD007437	138.50	139.85	1.35	0.01	1.3
YQ_022_010	MCD007438	139.85	140.15	0.30	0.02	2.2
YQ_022_010	MCD007439	140.15	140.70	0.55	0.09	6.1
YQ_022_010	MCD007441	140.70	141.20	0.50	0.23	4.8
YQ_022_010	MCD007442	141.20	141.50	0.30	0.03	2.8
YQ_022_010	MCD007443	141.50	142.90	1.40	0.26	8.1

Yoquivo Gold-Silver Project - 2022 Drill Program - Assays

Hole ID	Sample ID	From (m)	To (m)	Interval (m)	Au (ppm)	Ag (ppm)
YQ_022_010	MCD007444	142.90	143.45	0.55	0.06	1.0
YQ_022_010	MCD007445	143.45	144.30	0.85	0.01	1.1
YQ_022_010	MCD007446	144.30	144.95	0.65	0.00	0.8
YQ_022_010	MCD007447	144.95	145.95	1.00	0.01	1.6
YQ_022_010	MCD007448	145.95	146.85	0.90	0.02	3.1
YQ_022_010	MCD007449	146.85	148.00	1.15	0.03	3.3
YQ_022_010	MCD007451	148.00	148.60	0.60	0.10	10.6
YQ_022_010	MCD007452	148.60	149.50	0.90	0.19	21.2
YQ_022_010	MCD007453	149.50	150.30	0.80	0.12	16.4
YQ_022_010	MCD007538	155.80	157.00	1.20	0.02	3.1
YQ_022_010	MCD007539	157.00	157.70	0.70	0.05	11.2
YQ_022_010	MCD007541	157.70	158.20	0.50	0.10	22.3
YQ_022_010	MCD007542	158.20	159.40	1.20	0.08	11.9
YQ_022_010	MCD007543	159.40	159.80	0.40	0.51	27.6
YQ_022_010	MCD007544	159.80	161.15	1.35	0.01	2.1
YQ_022_010	MCD007545	161.15	162.00	0.85	0.00	0.3
YQ_022_010	MCD007546	162.00	162.90	0.90	0.00	0.6
YQ_022_010	MCD007547	162.90	163.20	0.30	0.12	14.6
YQ_022_010	MCD007548	163.20	164.55	1.35	0.01	0.3
YQ_022_010	MCD007549	164.55	166.05	1.50	0.01	1.2
YQ_022_010	MCD007551	166.05	167.40	1.35	0.02	2.0
YQ_022_010	MCD007552	167.40	168.45	1.05	0.05	6.5
YQ_022_010	MCD007553	168.45	169.10	0.65	0.04	5.8
YQ_022_010	MCD007554	169.10	169.45	0.35	0.37	17.5
YQ_022_010	MCD007555	169.45	169.70	0.25	0.38	27.9
YQ_022_010	MCD007556	169.70	171.00	1.30	0.14	12.0
YQ_022_010	MCD007557	171.00	172.65	1.65	0.04	5.0
YQ_022_010	MCD007558	172.65	174.25	1.60	0.02	1.3
YQ_022_010	MCD007559	174.25	174.60	0.35	0.08	5.6
YQ_022_010	MCD007561	174.60	175.10	0.50	0.03	2.9
YQ_022_010	MCD007562	175.10	176.50	1.40	0.05	5.7
YQ_022_010	MCD007563	176.50	177.80	1.30	0.13	5.5
YQ_022_010	MCD007564	177.80	179.30	1.50	0.02	2.2
YQ_022_010	MCD007565	179.30	180.00	0.70	0.09	8.0
YQ_022_010	MCD007566	180.00	181.70	1.70	0.08	7.5
YQ_022_010	MCD007567	181.70	182.15	0.45	0.03	5.9
YQ_022_010	MCD007568	182.15	182.90	0.75	0.02	1.3
YQ_022_010	MCD007569	182.90	183.20	0.30	0.02	0.9
YQ_022_010	MCD007571	183.20	183.60	0.40	0.21	20.8
YQ_022_010	MCD007572	183.60	184.15	0.55	0.38	60.0
YQ_022_010	MCD007573	184.15	184.70	0.55	0.04	11.0
YQ_022_010	MCD007574	184.70	185.30	0.60	0.01	0.3
YQ_022_010	MCD007575	185.30	185.55	0.25	0.12	22.7
YQ_022_010	MCD007576	185.55	185.80	0.25	0.01	1.3
YQ_022_010	MCD007577	185.80	186.00	0.20	0.32	11.6
YQ_022_010	MCD007578	186.00	186.60	0.60	0.03	0.3
YQ_022_010	MCD007579	186.60	186.90	0.30	1.17	77.1
YQ_022_010	MCD007581	186.90	187.95	1.05	0.01	0.8
YQ_022_010	MCD007582	187.95	188.35	0.40	0.13	1.1
YQ_022_010	MCD007583	188.35	188.80	0.45	0.07	6.0
YQ_022_010	MCD007584	188.80	189.40	0.60	0.02	1.5
YQ_022_010	MCD007585	189.40	189.80	0.40	0.12	14.1
YQ_022_010	MCD007586	189.80	190.20	0.40	0.84	69.2

Yoquivo Gold-Silver Project - 2022 Drill Program - Assays

Hole ID	Sample ID	From (m)	To (m)	Interval (m)	Au (ppm)	Ag (ppm)
YQ_022_010	MCD007587	190.20	191.15	0.95	0.24	26.5
YQ_022_010	MCD007588	191.15	191.70	0.55	0.65	85.4
YQ_022_010	MCD007589	191.70	192.00	0.30	0.50	40.8
YQ_022_010	MCD007591	192.00	192.45	0.45	0.58	89.3
YQ_022_010	MCD007592	192.45	193.30	0.85	0.47	64.8
YQ_022_010	MCD007593	193.30	193.90	0.60	0.18	33.8
YQ_022_010	MCD007594	193.90	194.20	0.30	0.35	102.0
YQ_022_010	MCD007595	194.20	195.00	0.80	0.39	122.0
YQ_022_010	MCD007596	195.00	195.55	0.55	0.27	136.0
YQ_022_010	MCD007597	195.55	196.40	0.85	0.36	149.0
YQ_022_010	MCD007598	196.40	196.80	0.40	0.02	2.7
YQ_022_010	MCD007599	196.80	197.15	0.35	0.01	0.8
YQ_022_010	MCD007601	197.15	197.65	0.50	1.01	10.0
YQ_022_010	MCD007602	197.65	197.95	0.30	0.59	59.5
YQ_022_010	MCD007603	197.95	198.15	0.20	0.22	39.3
YQ_022_010	MCD007605	198.15	199.05	0.90	0.59	105.0
YQ_022_010	MCD007606	199.05	199.55	0.50	0.39	67.7
YQ_022_010	MCD007607	199.55	200.40	0.85	0.48	121.0
YQ_022_010	MCD007608	200.40	200.65	0.25	0.16	52.5
YQ_022_010	MCD007609	200.65	202.00	1.35	0.15	31.1
YQ_022_010	MCD007611	202.00	202.90	0.90	0.16	55.1
YQ_022_010	MCD007612	202.90	203.80	0.90	0.34	69.2
YQ_022_010	MCD007613	203.80	204.60	0.80	0.42	40.9
YQ_022_010	MCD007614	204.60	206.15	1.55	0.15	37.8
YQ_022_010	MCD007615	219.40	220.55	1.15	0.03	7.0
YQ_022_010	MCD007616	273.35	274.40	1.05	0.44	49.1
YQ_022_010	MCD007617	274.40	275.45	1.05	0.40	56.8
YQ_022_010	MCD007618	275.45	276.00	0.55	0.11	15.1
YQ_022_011	MCD007454	59.35	60.35	1.00	0.00	0.3
YQ_022_011	MCD007455	60.35	61.60	1.25	0.00	0.3
YQ_022_011	MCD007456	61.60	62.55	0.95	0.00	0.3
YQ_022_011	MCD007457	62.55	63.00	0.45	0.00	0.3
YQ_022_011	MCD007458	63.00	63.90	0.90	0.00	0.3
YQ_022_011	MCD007459	63.90	64.60	0.70	0.00	0.3
YQ_022_011	MCD007461	64.60	65.05	0.45	0.00	0.8
YQ_022_011	MCD007462	65.05	65.60	0.55	0.01	0.5
YQ_022_011	MCD007463	65.60	66.40	0.80	0.02	1.5
YQ_022_011	MCD007464	66.40	67.60	1.20	0.02	1.6
YQ_022_011	MCD007465	67.60	68.60	1.00	0.02	2.1
YQ_022_011	MCD007466	68.60	70.15	1.55	0.02	2.2
YQ_022_011	MCD007467	70.15	70.35	0.20	4.01	692.0
YQ_022_011	MCD007468	70.35	72.20	1.85	0.04	4.6
YQ_022_011	MCD007469	87.30	88.40	1.10	0.00	0.3
YQ_022_011	MCD007471	88.40	90.00	1.60	0.00	1.0
YQ_022_011	MCD007472	90.00	90.75	0.75	0.00	1.4
YQ_022_011	MCD007473	90.75	91.65	0.90	0.00	1.0
YQ_022_011	MCD007474	91.65	92.00	0.35	0.01	0.9
YQ_022_011	MCD007475	92.00	93.10	1.10	0.00	0.6
YQ_022_011	MCD007476	93.10	94.20	1.10	0.00	0.7
YQ_022_011	MCD007477	94.20	95.40	1.20	0.00	0.3
YQ_022_011	MCD007478	95.40	95.70	0.30	0.00	0.3
YQ_022_011	MCD007479	95.70	96.45	0.75	0.00	0.3
YQ_022_011	MCD007481	119.35	119.90	0.55	0.00	0.3

Yoquivo Gold-Silver Project - 2022 Drill Program - Assays

Hole ID	Sample ID	From (m)	To (m)	Interval (m)	Au (ppm)	Ag (ppm)
YQ_022_011	MCD007482	119.90	120.45	0.55	0.00	0.3
YQ_022_011	MCD007483	120.45	120.80	0.35	0.00	0.3
YQ_022_011	MCD007484	120.80	122.15	1.35	0.01	0.7
YQ_022_011	MCD007485	134.40	135.85	1.45	0.00	0.3
YQ_022_011	MCD007486	135.85	137.30	1.45	0.01	0.3
YQ_022_011	MCD007487	137.30	138.70	1.40	0.01	0.7
YQ_022_011	MCD007488	138.70	140.10	1.40	0.01	0.9
YQ_022_011	MCD007489	140.10	141.50	1.40	0.01	2.2
YQ_022_011	MCD007491	141.50	142.95	1.45	0.03	5.4
YQ_022_011	MCD007492	142.95	144.40	1.45	0.03	3.9
YQ_022_011	MCD007493	144.40	145.80	1.40	0.03	4.9
YQ_022_011	MCD007494	145.80	147.15	1.35	0.05	5.2
YQ_022_011	MCD007495	147.15	148.65	1.50	0.07	4.7
YQ_022_011	MCD007496	148.65	150.00	1.35	0.01	1.6
YQ_022_011	MCD007497	228.45	229.55	1.10	0.00	0.3
YQ_022_011	MCD007498	229.55	230.30	0.75	0.00	0.3
YQ_022_011	MCD007499	230.30	231.25	0.95	0.00	0.3
YQ_022_011	MCD007501	231.25	232.00	0.75	0.00	0.8
YQ_022_011	MCD007502	232.00	232.80	0.80	0.02	3.8
YQ_022_011	MCD007503	232.80	234.00	1.20	0.01	0.8
YQ_022_011	MCD007504	234.00	235.40	1.40	0.01	0.6
YQ_022_011	MCD007505	235.40	235.90	0.50	0.01	1.1
YQ_022_011	MCD007506	235.90	236.60	0.70	0.01	0.7
YQ_022_011	MCD007507	236.60	237.65	1.05	0.01	0.5
YQ_022_011	MCD007508	237.65	238.20	0.55	0.00	0.5
YQ_022_011	MCD007509	238.20	238.70	0.50	0.00	0.3
YQ_022_011	MCD007511	238.70	240.00	1.30	0.00	0.5
YQ_022_011	MCD007512	240.00	241.50	1.50	0.00	0.3
YQ_022_011	MCD007513	251.80	253.15	1.35	0.00	0.3
YQ_022_011	MCD007514	253.15	253.50	0.35	0.00	0.3
YQ_022_011	MCD007515	253.50	254.85	1.35	0.00	0.3
YQ_022_011	MCD007516	260.15	261.60	1.45	0.01	4.2
YQ_022_011	MCD007517	261.60	262.75	1.15	0.17	33.2
YQ_022_011	MCD007518	262.75	263.05	0.30	0.01	3.0
YQ_022_011	MCD007519	263.05	263.60	0.55	0.01	2.8
YQ_022_011	MCD007521	263.60	264.10	0.50	0.09	16.9
YQ_022_011	MCD007522	264.10	265.45	1.35	0.30	62.8
YQ_022_011	MCD007523	265.45	266.75	1.30	0.13	31.8
YQ_022_011	MCD007524	266.75	268.05	1.30	0.05	11.8
YQ_022_011	MCD007525	268.05	268.70	0.65	0.22	38.8
YQ_022_011	MCD007526	268.70	270.00	1.30	0.25	27.8
YQ_022_011	MCD007527	277.15	278.30	1.15	0.04	11.2
YQ_022_011	MCD007528	278.30	279.15	0.85	0.12	27.8
YQ_022_011	MCD007529	279.15	280.20	1.05	0.03	10.1
YQ_022_011	MCD007531	286.60	288.00	1.40	0.00	0.5
YQ_022_011	MCD007532	288.00	288.20	0.20	0.02	2.6
YQ_022_011	MCD007533	288.20	289.55	1.35	0.00	0.3
YQ_022_011	MCD007534	296.35	297.75	1.40	0.00	0.3
YQ_022_011	MCD007535	297.75	298.20	0.45	0.00	0.3
YQ_022_011	MCD007536	298.20	298.60	0.40	0.00	0.3
YQ_022_011	MCD007537	298.60	299.80	1.20	0.00	0.3
YQ_022_012	MCD007619	26.80	27.70	0.90	0.00	0.3
YQ_022_012	MCD007621	27.70	28.00	0.30	0.21	27.2

Yoquivo Gold-Silver Project - 2022 Drill Program - Assays

Hole ID	Sample ID	From (m)	To (m)	Interval (m)	Au (ppm)	Ag (ppm)
YQ_022_012	MCD007622	28.00	28.95	0.95	0.06	18.0
YQ_022_012	MCD007623	101.30	102.20	0.90	0.00	0.5
YQ_022_012	MCD007624	102.20	103.00	0.80	0.00	1.5
YQ_022_012	MCD007625	103.00	104.30	1.30	0.00	0.7
YQ_022_012	MCD007626	108.20	109.20	1.00	0.02	2.7
YQ_022_012	MCD007627	109.20	109.40	0.20	0.03	3.6
YQ_022_012	MCD007628	109.40	109.95	0.55	0.01	1.9
YQ_022_012	MCD007629	109.95	111.05	1.10	0.03	2.5
YQ_022_012	MCD007631	111.05	112.15	1.10	0.01	1.6
YQ_022_012	MCD007632	112.15	113.20	1.05	0.01	2.4
YQ_022_012	MCD007633	113.20	113.60	0.40	0.04	3.5
YQ_022_012	MCD007634	113.60	114.00	0.40	0.03	3.0
YQ_022_012	MCD007635	114.00	115.05	1.05	0.03	3.3
YQ_022_012	MCD007636	115.05	116.25	1.20	0.02	2.1
YQ_022_012	MCD007637	116.25	116.55	0.30	0.03	1.8
YQ_022_012	MCD007638	116.55	118.00	1.45	0.01	2.0
YQ_022_012	MCD007639	118.00	119.70	1.70	0.02	2.0
YQ_022_012	MCD007641	119.70	121.20	1.50	0.02	2.1
YQ_022_012	MCD007642	121.20	121.85	0.65	0.02	2.7
YQ_022_012	MCD007643	121.85	122.85	1.00	0.02	2.2
YQ_022_012	MCD007644	122.85	123.10	0.25	0.02	3.2
YQ_022_012	MCD007645	123.10	124.05	0.95	0.01	2.1
YQ_022_012	MCD007646	124.05	125.15	1.10	0.01	2.6
YQ_022_012	MCD007647	125.15	125.40	0.25	0.02	2.5
YQ_022_012	MCD007648	125.40	126.00	0.60	0.01	3.1
YQ_022_012	MCD007649	126.00	126.90	0.90	0.02	2.5
YQ_022_012	MCD007651	126.90	128.40	1.50	0.02	2.7
YQ_022_012	MCD007652	128.40	129.00	0.60	0.06	5.7
YQ_022_012	MCD007653	129.00	130.55	1.55	0.02	3.4
YQ_022_012	MCD007654	130.55	132.00	1.45	0.01	2.7
YQ_022_012	MCD007655	132.00	132.50	0.50	0.02	4.6
YQ_022_012	MCD007656	132.50	133.60	1.10	0.01	4.0
YQ_022_012	MCD007657	133.60	134.85	1.25	0.02	3.8
YQ_022_012	MCD007658	134.85	136.30	1.45	0.02	2.2
YQ_022_012	MCD007659	136.30	136.85	0.55	0.08	12.5
YQ_022_012	MCD007661	136.85	137.90	1.05	0.03	4.7
YQ_022_012	MCD007662	137.90	138.95	1.05	0.03	4.0
YQ_022_012	MCD007663	138.95	140.55	1.60	0.07	10.2
YQ_022_012	MCD007664	140.55	141.95	1.40	0.09	14.7
YQ_022_012	MCD007665	141.95	143.05	1.10	0.29	48.1
YQ_022_012	MCD007666	174.90	175.80	0.90	0.02	5.2
YQ_022_012	MCD007667	175.80	176.10	0.30	0.15	27.0
YQ_022_012	MCD007668	176.10	177.40	1.30	0.01	2.6
YQ_022_012	MCD007669	197.85	198.75	0.90	0.01	1.0
YQ_022_012	MCD007671	198.75	199.15	0.40	0.01	1.7
YQ_022_012	MCD007672	199.15	199.75	0.60	0.01	1.4
YQ_022_012	MCD007673	199.75	200.15	0.40	0.01	0.9
YQ_022_012	MCD007674	208.00	209.05	1.05	0.02	3.0
YQ_022_012	MCD007675	209.05	209.75	0.70	0.06	9.5
YQ_022_012	MCD007676	209.75	210.70	0.95	0.00	0.7
YQ_022_012	MCD007677	257.50	259.00	1.50	0.01	2.8
YQ_022_012	MCD007678	259.00	259.45	0.45	0.01	2.9
YQ_022_012	MCD007679	259.45	261.00	1.55	0.01	2.3

Yoquivo Gold-Silver Project - 2022 Drill Program - Assays

Hole ID	Sample ID	From (m)	To (m)	Interval (m)	Au (ppm)	Ag (ppm)
YQ_022_012	MCD007681	268.50	270.00	1.50	0.00	0.3
YQ_022_012	MCD007682	270.00	270.70	0.70	0.00	0.3
YQ_022_012	MCD007683	270.70	272.20	1.50	0.00	0.3
YQ_022_012	MCD007684	292.35	293.85	1.50	0.00	0.3
YQ_022_012	MCD007685	293.85	294.20	0.35	0.07	7.4
YQ_022_012	MCD007686	294.20	295.15	0.95	0.00	0.3
YQ_022_013	MCD007687	118.55	118.75	0.20	0.00	0.3
YQ_022_013	MCD007688	118.75	119.70	0.95	0.00	0.3
YQ_022_013	MCD007689	119.70	120.75	1.05	0.00	0.3
YQ_022_013	MCD007691	120.75	121.25	0.50	0.00	0.3
YQ_022_013	MCD007692	123.40	124.60	1.20	0.00	0.3
YQ_022_013	MCD007693	124.60	125.60	1.00	0.00	0.3
YQ_022_013	MCD007694	152.30	153.25	0.95	0.00	0.3
YQ_022_013	MCD007695	153.25	154.25	1.00	0.00	0.5
YQ_022_013	MCD007696	154.25	154.50	0.25	0.01	0.5
YQ_022_013	MCD007697	154.50	156.00	1.50	0.00	0.3
YQ_022_013	MCD007698	156.00	157.50	1.50	0.01	1.8
YQ_022_013	MCD007699	157.50	158.70	1.20	0.02	4.3
YQ_022_013	MCD007701	158.70	159.20	0.50	0.35	80.7
YQ_022_013	MCD007702	159.20	159.75	0.55	0.79	191.0
YQ_022_013	MCD007703	159.75	160.35	0.60	0.32	88.5
YQ_022_013	MCD007704	160.35	160.95	0.60	0.11	34.5
YQ_022_013	MCD007705	160.95	162.30	1.35	0.54	99.4
YQ_022_013	MCD007706	162.30	162.90	0.60	0.03	5.5
YQ_022_013	MCD007707	162.90	163.15	0.25	0.01	4.0
YQ_022_013	MCD007708	163.15	164.50	1.35	0.04	6.3
YQ_022_013	MCD007709	164.50	165.00	0.50	0.03	5.8
YQ_022_013	MCD007711	165.00	165.70	0.70	0.02	4.1
YQ_022_013	MCD007712	165.70	166.35	0.65	0.01	2.7
YQ_022_013	MCD007713	166.35	167.50	1.15	0.01	1.8
YQ_022_013	MCD007714	167.50	168.40	0.90	0.01	3.0
YQ_022_013	MCD007715	168.40	169.75	1.35	0.05	11.9
YQ_022_013	MCD007716	169.75	171.20	1.45	0.03	6.7
YQ_022_013	MCD007717	171.20	172.75	1.55	0.03	10.8
YQ_022_013	MCD007718	172.75	174.00	1.25	0.09	12.5
YQ_022_013	MCD007719	174.00	175.30	1.30	0.02	3.7
YQ_022_013	MCD007721	175.30	176.45	1.15	0.02	2.4
YQ_022_013	MCD007722	176.45	178.00	1.55	0.01	2.6
YQ_022_013	MCD007723	178.00	179.50	1.50	0.00	1.5
YQ_022_013	MCD007724	179.50	179.95	0.45	0.01	2.7
YQ_022_013	MCD007725	179.95	181.20	1.25	0.01	2.1
YQ_022_013	MCD007726	181.20	181.60	0.40	0.01	4.3
YQ_022_013	MCD007727	181.60	182.10	0.50	0.01	3.2
YQ_022_013	MCD007728	182.10	182.25	0.15	0.00	1.5
YQ_022_013	MCD007729	182.25	183.25	1.00	0.03	7.2
YQ_022_013	MCD007731	183.25	183.95	0.70	0.00	0.3
YQ_022_013	MCD007732	183.95	185.40	1.45	0.00	1.1
YQ_022_013	MCD007733	192.95	194.30	1.35	0.00	0.3
YQ_022_013	MCD007734	194.30	195.55	1.25	0.00	0.7
YQ_022_013	MCD007735	195.55	197.00	1.45	0.00	0.3
YQ_022_013	MCD007736	243.10	244.55	1.45	0.00	1.1
YQ_022_013	MCD007737	244.55	246.30	1.75	0.04	7.0
YQ_022_013	MCD007738	246.30	247.75	1.45	0.01	1.7

Yoquivo Gold-Silver Project - 2022 Drill Program - Assays

Hole ID	Sample ID	From (m)	To (m)	Interval (m)	Au (ppm)	Ag (ppm)
YQ_022_013	MCD007739	247.75	249.25	1.50	0.00	1.0
YQ_022_013	MCD007741	249.25	250.75	1.50	0.01	2.4
YQ_022_013	MCD007742	250.75	251.70	0.95	0.02	3.5
YQ_022_013	MCD007743	251.70	252.70	1.00	0.01	5.0
YQ_022_013	MCD007744	252.70	253.75	1.05	0.01	4.7
YQ_022_013	MCD007745	253.75	254.60	0.85	0.01	4.7
YQ_022_013	MCD007746	254.60	255.85	1.25	0.14	19.7
YQ_022_013	MCD007747	255.85	256.60	0.75	0.72	94.5
YQ_022_013	MCD007748	256.60	257.00	0.40	0.16	28.2
YQ_022_013	MCD007749	257.00	258.50	1.50	0.05	10.7
YQ_022_013	MCD007751	258.50	260.00	1.50	0.08	13.2
YQ_022_013	MCD007752	260.00	261.50	1.50	0.01	1.5
YQ_022_013	MCD007753	261.50	263.00	1.50	0.08	15.3
YQ_022_013	MCD007754	263.00	264.00	1.00	0.02	4.4
YQ_022_013	MCD007755	264.00	265.40	1.40	0.08	19.1
YQ_022_013	MCD007756	265.40	265.75	0.35	0.41	79.2
YQ_022_013	MCD007757	265.75	266.70	0.95	0.19	40.9
YQ_022_013	MCD007758	266.70	267.20	0.50	0.92	91.4
YQ_022_013	MCD007759	267.20	267.60	0.40	0.23	57.1
YQ_022_013	MCD007761	267.60	268.10	0.50	0.54	448.0
YQ_022_013	MCD007762	268.10	268.60	0.50	0.16	43.3
YQ_022_013	MCD007763	268.60	269.60	1.00	0.14	38.5
YQ_022_013	MCD007764	269.60	270.85	1.25	0.11	25.2
YQ_022_013	MCD007765	270.85	271.95	1.10	0.61	133.0
YQ_022_013	MCD007766	271.95	273.45	1.50	0.23	33.7
YQ_022_013	MCD007767	273.45	275.10	1.65	0.05	13.2
YQ_022_013	MCD007768	275.10	276.00	0.90	0.10	38.9
YQ_022_013	MCD007769	276.00	277.50	1.50	0.06	38.5
YQ_022_013	MCD007771	277.50	278.05	0.55	0.20	54.8
YQ_022_013	MCD007772	278.05	278.90	0.85	0.05	16.9
YQ_022_013	MCD007773	278.90	279.40	0.50	0.08	9.6
YQ_022_013	MCD007774	279.40	280.90	1.50	0.01	2.7
YQ_022_013	MCD007775	280.90	282.40	1.50	0.00	1.1
YQ_022_013	MCD007776	282.40	283.80	1.40	0.35	63.4
YQ_022_013	MCD007777	283.80	285.00	1.20	3.28	414.0
YQ_022_013	MCD007778	285.00	285.95	0.95	0.06	20.3
YQ_022_013	MCD007779	285.95	287.45	1.50	0.01	2.1
YQ_022_013	MCD007781	287.45	289.05	1.60	0.01	1.2
YQ_022_013	MCD007782	289.05	290.50	1.45	0.46	80.5
YQ_022_013	MCD007783	290.50	291.95	1.45	0.02	6.0
YQ_022_013	MCD007784	291.95	293.00	1.05	0.01	2.1
YQ_022_013	MCD007785	293.00	293.70	0.70	0.00	1.6
YQ_022_013	MCD007786	293.70	294.80	1.10	0.05	19.2
YQ_022_013	MCD007787	294.80	296.25	1.45	0.54	78.8
YQ_022_013	MCD007788	296.25	297.00	0.75	3.27	374.0
YQ_022_013	MCD007789	297.00	298.40	1.40	1.13	123.0
YQ_022_013	MCD007791	298.40	299.00	0.60	1.19	88.5
YQ_022_013	MCD007792	299.00	300.30	1.30	1.90	243.0
YQ_022_013	MCD007793	300.30	301.75	1.45	1.03	159.0
YQ_022_013	MCD007794	301.75	302.10	0.35	1.54	429.0
YQ_022_013	MCD007795	302.10	303.00	0.90	0.20	44.6
YQ_022_014	MCD007796	29.55	30.80	1.25	0.00	0.5
YQ_022_014	MCD007797	30.80	31.10	0.30	0.01	1.0

Yoquivo Gold-Silver Project - 2022 Drill Program - Assays

Hole ID	Sample ID	From (m)	To (m)	Interval (m)	Au (ppm)	Ag (ppm)
YQ_022_014	MCD007798	31.10	32.40	1.30	0.01	1.2
YQ_022_014	MCD007799	32.40	32.80	0.40	0.01	0.7
YQ_022_014	MCD007801	32.80	33.45	0.65	0.02	4.2
YQ_022_014	MCD007802	33.45	34.05	0.60	0.01	3.5
YQ_022_014	MCD007803	34.05	35.10	1.05	0.03	6.2
YQ_022_014	MCD007804	35.10	36.00	0.90	0.00	0.6
YQ_022_014	MCD007805	36.00	37.00	1.00	0.02	12.7
YQ_022_014	MCD007806	37.00	38.20	1.20	0.04	12.3
YQ_022_014	MCD007807	41.45	42.00	0.55	0.17	26.7
YQ_022_014	MCD007808	42.00	43.50	1.50	0.03	3.8
YQ_022_014	MCD007809	43.50	45.00	1.50	0.01	41.5
YQ_022_014	MCD007811	45.00	45.70	0.70	23.30	3850.0
YQ_022_014	MCD007812	45.70	47.20	1.50	0.19	54.4
YQ_022_014	MCD007813	65.70	66.70	1.00	0.03	9.4
YQ_022_014	MCD007814	66.70	67.00	0.30	0.01	5.7
YQ_022_014	MCD007815	67.00	68.00	1.00	0.00	1.6
YQ_022_014	MCD007816	71.70	72.70	1.00	0.04	5.1
YQ_022_014	MCD007817	72.70	72.90	0.20	0.07	16.3
YQ_022_014	MCD007818	72.90	73.90	1.00	0.02	2.5
YQ_022_014	MCD007819	76.50	77.50	1.00	0.06	5.1
YQ_022_014	MCD007821	77.50	77.65	0.15	0.02	11.2
YQ_022_014	MCD007822	77.65	78.50	0.85	0.05	4.3
YQ_022_014	MCD007823	78.50	78.75	0.25	0.02	5.2
YQ_022_014	MCD007824	78.75	79.75	1.00	0.01	2.2
YQ_022_014	MCD007825	106.60	106.80	0.20	6.29	556.0
YQ_022_014	MCD007826	107.80	108.75	0.95	0.00	0.9
YQ_022_014	MCD007827	108.75	108.95	0.20	0.00	1.2
YQ_022_014	MCD007828	112.40	113.40	1.00	0.01	1.2
YQ_022_014	MCD007829	113.40	113.75	0.35	0.01	0.8
YQ_022_014	MCD007831	113.75	114.75	1.00	0.00	1.1
YQ_022_014	MCD007832	145.50	146.50	1.00	0.02	4.9
YQ_022_014	MCD007833	146.50	146.75	0.25	1.25	337.0
YQ_022_014	MCD007834	146.75	148.00	1.25	0.03	3.0
YQ_022_014	MCD007835	148.00	148.20	0.20	0.15	34.3
YQ_022_014	MCD007836	148.20	149.70	1.50	0.06	4.6
YQ_022_014	MCD007837	149.70	151.20	1.50	0.01	1.3
YQ_022_014	MCD007838	151.20	152.70	1.50	0.01	2.1
YQ_022_014	MCD007839	152.70	154.20	1.50	0.01	1.8
YQ_022_014	MCD007841	154.20	155.45	1.25	0.08	6.7
YQ_022_014	MCD007842	155.45	156.25	0.80	0.12	15.6
YQ_022_014	MCD007843	156.25	157.10	0.85	0.06	10.0
YQ_022_014	MCD007844	157.10	158.55	1.45	0.13	21.7
YQ_022_014	MCD007845	158.55	159.00	0.45	0.16	1355.0
YQ_022_014	MCD007846	159.00	160.50	1.50	0.35	366.0
YQ_022_014	MCD007847	160.50	162.00	1.50	0.08	257.0
YQ_022_014	MCD007848	162.00	163.50	1.50	0.49	56.0
YQ_022_014	MCD007849	163.50	165.00	1.50	0.39	45.3
YQ_022_014	MCD007851	165.00	166.50	1.50	0.11	98.3
YQ_022_014	MCD007852	166.50	167.90	1.40	0.30	79.4
YQ_022_014	MCD007853	167.90	169.30	1.40	0.15	20.3
YQ_022_014	MCD007854	169.30	170.05	0.75	0.01	1.6
YQ_022_014	MCD007855	172.65	174.00	1.35	0.01	1.8
YQ_022_014	MCD007856	174.00	174.55	0.55	0.26	35.8

Yoquivo Gold-Silver Project - 2022 Drill Program - Assays

Hole ID	Sample ID	From (m)	To (m)	Interval (m)	Au (ppm)	Ag (ppm)
YQ_022_014	MCD007857	174.55	175.65	1.10	0.02	2.4
YQ_022_014	MCD007858	227.45	228.55	1.10	0.00	0.5
YQ_022_014	MCD007859	228.55	229.75	1.20	0.04	11.4
YQ_022_014	MCD007861	229.75	230.75	1.00	0.00	0.8
YQ_022_014	MCD007862	234.00	235.15	1.15	0.01	0.8
YQ_022_014	MCD007863	235.15	236.35	1.20	0.05	9.5
YQ_022_014	MCD007864	236.35	237.30	0.95	0.01	1.3
YQ_022_015	MCD007865	16.70	18.00	1.30	0.01	0.7
YQ_022_015	MCD007866	18.00	19.10	1.10	0.05	0.3
YQ_022_015	MCD007867	20.55	20.95	0.40	0.00	0.7
YQ_022_015	MCD007868	20.95	21.15	0.20	0.01	5.2
YQ_022_015	MCD007869	21.15	21.60	0.45	0.00	0.3
YQ_022_015	MCD007871	29.20	29.80	0.60	0.00	0.3
YQ_022_015	MCD007872	29.80	30.05	0.25	0.00	0.3
YQ_022_015	MCD007873	30.05	30.55	0.50	0.00	0.3
YQ_022_015	MCD007874	31.70	32.25	0.55	0.03	3.6
YQ_022_015	MCD007875	32.25	32.60	0.35	0.98	207.0
YQ_022_015	MCD007876	32.60	33.25	0.65	0.01	1.6
YQ_022_015	MCD007877	39.45	40.55	1.10	0.62	149.0
YQ_022_015	MCD007878	40.55	41.10	0.55	6.92	1640.0
YQ_022_015	MCD007879	41.10	42.65	1.55	0.03	8.4
YQ_022_015	MCD007881	42.65	44.15	1.50	0.02	7.3
YQ_022_015	MCD007882	44.15	45.50	1.35	0.04	9.7
YQ_022_015	MCD007883	45.50	46.90	1.40	0.02	4.6
YQ_022_015	MCD007884	46.90	47.60	0.70	0.03	7.4
YQ_022_015	MCD007885	47.60	48.40	0.80	0.02	4.1
YQ_022_015	MCD007886	48.40	60.40	12.00	0.00	0.7
YQ_022_015	MCD007887	60.40	60.85	0.45	0.02	4.4
YQ_022_015	MCD007888	60.85	61.20	0.35	0.00	0.6
YQ_022_015	MCD007889	67.50	68.15	0.65	0.01	2.6
YQ_022_015	MCD007891	68.15	68.45	0.30	0.03	7.2
YQ_022_015	MCD007892	68.45	69.40	0.95	0.00	1.7
YQ_022_015	MCD007893	75.00	75.90	0.90	0.00	1.2
YQ_022_015	MCD007894	75.90	76.25	0.35	0.01	4.0
YQ_022_015	MCD007895	76.25	76.75	0.50	0.00	0.3
YQ_022_015	MCD007896	107.95	108.95	1.00	0.00	0.6
YQ_022_015	MCD007897	108.95	110.00	1.05	0.00	0.7
YQ_022_015	MCD007898	110.00	110.65	0.65	0.00	1.0
YQ_022_015	MCD007899	110.65	111.40	0.75	0.00	0.9
YQ_022_015	MCD007901	111.40	111.70	0.30	0.00	0.8
YQ_022_015	MCD007902	111.70	113.15	1.45	0.00	0.3
YQ_022_015	MCD007903	113.15	114.00	0.85	0.00	0.3
YQ_022_015	MCD007904	114.00	115.10	1.10	0.00	0.3
YQ_022_015	MCD007905	115.10	119.35	4.25	0.00	0.3
YQ_022_015	MCD007906	119.35	119.60	0.25	0.00	0.3
YQ_022_015	MCD007907	119.60	120.60	1.00	0.00	0.3
YQ_022_015	MCD007908	120.60	123.50	2.90	0.01	0.3
YQ_022_015	MCD007909	123.50	124.00	0.50	0.01	1.4
YQ_022_015	MCD007911	124.00	125.25	1.25	0.01	4.0
YQ_022_015	MCD007912	125.25	126.30	1.05	0.00	0.3
YQ_022_015	MCD007913	126.30	127.50	1.20	0.01	1.3
YQ_022_015	MCD007914	127.50	127.95	0.45	0.00	0.3
YQ_022_015	MCD007915	127.95	130.10	2.15	0.01	1.0

Yoquivo Gold-Silver Project - 2022 Drill Program - Assays

Hole ID	Sample ID	From (m)	To (m)	Interval (m)	Au (ppm)	Ag (ppm)
YQ_022_015	MCD007916	130.10	131.70	1.60	0.04	3.9
YQ_022_015	MCD007917	131.70	132.00	0.30	0.03	2.0
YQ_022_015	MCD007918	132.00	133.05	1.05	0.01	1.0
YQ_022_015	MCD007919	133.05	136.40	3.35	0.01	1.8
YQ_022_015	MCD007921	136.40	137.45	1.05	0.01	2.2
YQ_022_015	MCD007922	137.45	138.40	0.95	0.01	1.6
YQ_022_015	MCD007923	141.15	141.80	0.65	0.01	1.2
YQ_022_015	MCD007924	141.80	142.90	1.10	0.02	3.2
YQ_022_016	MCD007925	46.05	47.40	1.35	0.00	0.3
YQ_022_016	MCD007926	47.40	47.60	0.20	0.00	0.6
YQ_022_016	MCD007927	47.60	49.10	1.50	0.00	0.7
YQ_022_016	MCD007928	49.10	50.30	1.20	0.01	1.1
YQ_022_016	MCD007929	50.30	51.70	1.40	0.02	3.1
YQ_022_016	MCD007931	51.70	53.00	1.30	0.01	0.8
YQ_022_016	MCD007932	53.00	54.25	1.25	0.02	5.5
YQ_022_016	MCD007933	54.25	55.10	0.85	0.07	15.4
YQ_022_016	MCD007934	55.10	55.65	0.55	0.05	10.0
YQ_022_016	MCD007935	55.65	56.35	0.70	0.06	10.7
YQ_022_016	MCD007936	56.35	57.75	1.40	0.02	3.8
YQ_022_016	MCD007937	57.75	59.10	1.35	0.01	2.6
YQ_022_016	MCD007938	59.10	60.30	1.20	0.00	0.5
YQ_022_016	MCD007939	60.30	61.25	0.95	0.00	0.3
YQ_022_016	MCD007941	61.25	62.65	1.40	0.00	0.3
YQ_022_016	MCD007942	62.65	64.05	1.40	0.00	0.6
YQ_022_016	MCD007943	64.05	65.15	1.10	0.00	0.6
YQ_022_016	MCD007944	65.15	66.20	1.05	0.00	0.9
YQ_022_016	MCD007945	66.20	66.40	0.20	0.02	3.4
YQ_022_016	MCD007946	66.40	66.95	0.55	0.01	1.2
YQ_022_016	MCD007947	66.95	67.30	0.35	0.01	2.0
YQ_022_016	MCD007948	67.30	68.55	1.25	0.00	1.2
YQ_022_016	MCD007949	99.00	100.05	1.05	0.03	1.4
YQ_022_016	MCD007951	100.05	101.70	1.65	0.05	1.6
YQ_022_016	MCD007952	101.70	102.20	0.50	0.05	3.0
YQ_022_016	MCD007953	102.20	103.70	1.50	0.02	2.4
YQ_022_016	MCD007954	103.70	104.60	0.90	0.03	2.4
YQ_022_016	MCD007955	104.60	105.60	1.00	0.01	2.0
YQ_022_016	MCD007956	105.60	106.65	1.05	0.35	43.7
YQ_022_016	MCD007957	106.65	107.45	0.80	0.08	5.9
YQ_022_016	MCD007958	107.45	108.30	0.85	0.09	16.7
YQ_022_016	MCD007959	108.30	112.55	4.25	0.08	12.3
YQ_022_016	MCD007961	112.55	113.85	1.30	0.14	29.3
YQ_022_016	MCD007962	113.85	114.75	0.90	0.02	6.7
YQ_022_016	MCD007963	114.75	116.05	1.30	0.01	1.7
YQ_022_016	MCD007964	116.05	117.00	0.95	0.01	2.2
YQ_022_016	MCD007965	117.00	117.60	0.60	0.01	1.7
YQ_022_016	MCD007966	117.60	119.10	1.50	0.01	1.7
YQ_022_016	MCD007967	119.10	119.85	0.75	0.01	2.0
YQ_022_016	MCD007968	124.30	125.70	1.40	0.16	44.8
YQ_022_016	MCD007969	125.70	127.10	1.40	0.23	38.8
YQ_022_016	MCD007971	127.10	127.50	0.40	0.00	0.7
YQ_022_016	MCD007972	127.50	129.00	1.50	0.01	2.8
YQ_022_017	MCD007973	87.80	89.30	1.50	0.03	2.5
YQ_022_017	MCD007974	89.30	90.00	0.70	0.11	2.0

Yoquivo Gold-Silver Project - 2022 Drill Program - Assays

Hole ID	Sample ID	From (m)	To (m)	Interval (m)	Au (ppm)	Ag (ppm)
YQ_022_017	MCD007975	90.00	91.20	1.20	0.01	1.0
YQ_022_017	MCD007976	98.45	99.50	1.05	0.00	0.3
YQ_022_017	MCD007977	99.50	100.20	0.70	0.01	0.3
YQ_022_017	MCD007978	100.20	101.35	1.15	0.02	0.3
YQ_022_017	MCD007979	124.35	125.30	0.95	0.03	3.1
YQ_022_017	MCD007981	125.30	126.00	0.70	1.64	32.6
YQ_022_017	MCD007982	126.00	127.15	1.15	6.73	116.0
YQ_022_017	MCD007983	127.15	128.35	1.20	34.70	400.0
YQ_022_017	MCD007984	128.35	129.25	0.90	2.57	88.4
YQ_022_017	MCD007985	129.25	129.95	0.70	0.39	8.3
YQ_022_017	MCD007986	129.95	131.45	1.50	0.08	1.2
YQ_022_017	MCD007987	131.45	132.90	1.45	0.01	0.3
YQ_022_017	MCD007988	132.90	134.30	1.40	0.00	0.3
YQ_022_017	MCD007989	134.30	135.40	1.10	0.00	0.3
YQ_022_017	MCD007991	135.40	136.80	1.40	0.00	0.3
YQ_022_017	MCD007992	136.80	138.00	1.20	0.00	0.3
YQ_022_017	MCD007993	138.00	139.00	1.00	0.00	0.3
YQ_022_017	MCD007994	139.00	139.65	0.65	0.10	0.7
YQ_022_017	MCD007995	186.30	187.10	0.80	0.00	0.3
YQ_022_017	MCD007996	187.10	188.00	0.90	0.00	0.3
YQ_022_017	MCD007997	188.00	189.30	1.30	0.00	0.3
YQ_022_017	MCD007998	189.30	190.20	0.90	0.00	0.3
YQ_022_017	MCD007999	196.95	197.45	0.50	0.00	0.3
YQ_022_017	MCD008001	197.45	198.50	1.05	0.00	0.3
YQ_022_017	MCD008002	198.50	199.60	1.10	0.00	0.3
YQ_022_017	MCD008003	199.60	200.65	1.05	0.00	0.3
YQ_022_017	MCD008004	200.65	201.70	1.05	0.00	0.3
YQ_022_017	MCD008005	201.70	202.85	1.15	0.00	0.3
YQ_022_017	MCD008006	226.75	227.60	0.85	0.00	0.3
YQ_022_017	MCD008007	227.60	228.10	0.50	0.03	0.9
YQ_022_017	MCD008008	228.10	229.20	1.10	0.00	0.3
YQ_022_018	MCD008009	63.90	64.50	0.60	0.01	1.9
YQ_022_018	MCD008011	64.50	65.50	1.00	0.02	1.4
YQ_022_018	MCD008012	65.50	66.00	0.50	0.01	0.7
YQ_022_018	MCD008013	91.90	92.60	0.70	0.01	1.3
YQ_022_018	MCD008014	92.60	93.00	0.40	0.04	3.3
YQ_022_018	MCD008015	93.00	93.70	0.70	0.02	1.7
YQ_022_018	MCD008016	93.70	94.70	1.00	0.01	1.0
YQ_022_018	MCD008017	107.50	108.40	0.90	0.01	1.2
YQ_022_018	MCD008018	108.40	108.70	0.30	0.02	2.4
YQ_022_018	MCD008019	108.70	109.70	1.00	0.01	0.6
YQ_022_018	MCD008021	113.50	113.90	0.40	0.02	1.5
YQ_022_018	MCD008022	113.90	114.20	0.30	0.04	3.2
YQ_022_018	MCD008023	114.20	115.00	0.80	0.03	2.0
YQ_022_018	MCD008024	174.00	174.70	0.70	0.01	0.3
YQ_022_018	MCD008025	174.70	175.45	0.75	0.00	0.3
YQ_022_018	MCD008026	182.10	182.90	0.80	0.01	0.3
YQ_022_018	MCD008027	182.90	183.45	0.55	0.00	0.3
YQ_022_018	MCD008028	183.45	184.00	0.55	0.01	0.3
YQ_022_018	MCD008029	184.00	184.90	0.90	0.00	0.3
YQ_022_018	MCD008031	186.75	187.65	0.90	0.01	0.3
YQ_022_018	MCD008032	187.65	188.50	0.85	0.00	0.3
YQ_022_018	MCD008033	249.10	250.00	0.90	0.22	3.1

Yoquivo Gold-Silver Project - 2022 Drill Program - Assays

Hole ID	Sample ID	From (m)	To (m)	Interval (m)	Au (ppm)	Ag (ppm)
YQ_022_019	MCD008034	30.85	31.65	0.80	0.01	12.4
YQ_022_019	MCD008035	31.65	32.25	0.60	0.02	18.4
YQ_022_019	MCD008036	32.25	33.40	1.15	0.01	9.6
YQ_022_019	MCD008037	33.40	34.80	1.40	0.00	3.7
YQ_022_019	MCD008038	34.80	35.20	0.40	0.01	1.4
YQ_022_019	MCD008039	35.20	36.55	1.35	0.02	3.1
YQ_022_019	MCD008041	36.55	38.00	1.45	0.01	2.3
YQ_022_019	MCD008042	38.00	39.30	1.30	0.01	4.7
YQ_022_019	MCD008043	39.30	40.45	1.15	0.02	12.0
YQ_022_019	MCD008044	40.45	41.30	0.85	0.02	6.6
YQ_022_019	MCD008045	41.30	42.55	1.25	0.05	12.2
YQ_022_019	MCD008046	42.55	44.00	1.45	0.01	2.1
YQ_022_019	MCD008047	44.00	44.80	0.80	0.01	0.3
YQ_022_019	MCD008048	80.60	81.40	0.80	0.01	8.8
YQ_022_019	MCD008049	81.40	81.70	0.30	0.03	12.7
YQ_022_019	MCD008051	81.70	82.75	1.05	0.03	29.6
YQ_022_019	MCD008052	82.75	83.30	0.55	0.03	16.9
YQ_022_019	MCD008053	83.30	84.10	0.80	0.06	156.0
YQ_022_019	MCD008054	84.10	84.40	0.30	1.95	109.0
YQ_022_019	MCD008055	84.40	85.25	0.85	0.02	9.5
YQ_022_019	MCD008056	85.25	86.80	1.55	0.02	2.4
YQ_022_019	MCD008057	90.00	91.00	1.00	0.03	2.0
YQ_022_019	MCD008058	91.00	91.65	0.65	0.06	7.2
YQ_022_019	MCD008059	91.65	92.20	0.55	0.08	8.3
YQ_022_019	MCD008061	92.20	92.80	0.60	0.03	2.9
YQ_022_019	MCD008062	92.80	94.10	1.30	0.02	1.8
YQ_022_019	MCD008063	94.10	95.35	1.25	0.03	1.9
YQ_022_019	MCD008064	95.35	96.45	1.10	0.03	2.3
YQ_022_019	MCD008065	96.45	97.50	1.05	0.02	1.6
YQ_022_019	MCD008066	101.20	102.60	1.40	0.04	1.9
YQ_022_019	MCD008067	102.60	103.45	0.85	0.34	2.8
YQ_022_019	MCD008068	103.45	104.65	1.20	0.07	4.5
YQ_022_019	MCD008069	104.65	105.50	0.85	0.09	2.0
YQ_022_019	MCD008071	105.50	106.45	0.95	0.04	5.8
YQ_022_020	MCD008072	13.95	15.25	1.30	0.06	12.4
YQ_022_020	MCD008073	15.25	16.50	1.25	0.35	23.6
YQ_022_020	MCD008074	16.50	17.80	1.30	0.03	8.3
YQ_022_020	MCD008075	17.80	18.50	0.70	0.01	12.4
YQ_022_020	MCD008076	18.50	19.40	0.90	0.03	18.1
YQ_022_020	MCD008077	19.40	20.10	0.70	0.02	5.5
YQ_022_020	MCD008078	20.10	20.40	0.30	0.04	14.2
YQ_022_020	MCD008079	20.40	21.75	1.35	0.00	5.7
YQ_022_020	MCD008081	87.90	89.00	1.10	0.00	0.3
YQ_022_020	MCD008082	89.00	90.25	1.25	0.00	0.3
YQ_022_020	MCD008083	90.25	91.75	1.50	0.00	0.3
YQ_022_020	MCD008084	91.75	93.20	1.45	0.00	0.3
YQ_022_020	MCD008085	93.20	94.40	1.20	0.00	0.6
YQ_022_020	MCD008086	94.40	95.55	1.15	0.00	0.6
YQ_022_020	MCD008087	95.55	96.80	1.25	0.04	1.4
YQ_022_020	MCD008088	96.80	97.35	0.55	0.06	7.6
YQ_022_020	MCD008089	97.35	98.50	1.15	0.16	6.4
YQ_022_020	MCD008091	98.50	99.30	0.80	0.20	14.9
YQ_022_020	MCD008092	99.30	99.95	0.65	0.17	16.3

Yoquivo Gold-Silver Project - 2022 Drill Program - Assays

Hole ID	Sample ID	From (m)	To (m)	Interval (m)	Au (ppm)	Ag (ppm)
YQ_022_020	MCD008093	99.95	100.80	0.85	0.11	7.2
YQ_022_020	MCD008094	100.80	101.35	0.55	0.26	18.2
YQ_022_020	MCD008095	101.35	101.85	0.50	1.46	79.6
YQ_022_020	MCD008096	101.85	102.15	0.30	0.15	32.3
YQ_022_020	MCD008097	102.15	102.95	0.80	0.04	5.0
YQ_022_020	MCD008098	102.95	104.05	1.10	0.05	11.0
YQ_022_020	MCD008099	104.05	104.65	0.60	0.09	6.6
YQ_022_020	MCD008101	104.65	105.10	0.45	2.23	87.6
YQ_022_020	MCD008102	105.10	105.65	0.55	0.50	39.5
YQ_022_020	MCD008103	105.65	106.35	0.70	0.09	33.6
YQ_022_020	MCD008104	106.35	107.20	0.85	0.14	82.8
YQ_022_020	MCD008105	107.20	107.90	0.70	4.48	677.0
YQ_022_020	MCD008106	107.90	108.20	0.30	1.42	126.0
YQ_022_020	MCD008107	108.20	108.80	0.60	0.05	23.1
YQ_022_020	MCD008108	108.80	109.50	0.70	0.13	16.6
YQ_022_020	MCD008109	109.50	110.20	0.70	0.18	26.9
YQ_022_020	MCD008111	110.20	110.90	0.70	0.50	50.1
YQ_022_020	MCD008112	110.90	111.65	0.75	0.78	97.0
YQ_022_020	MCD008113	111.65	112.15	0.50	0.03	8.4
YQ_022_020	MCD008114	112.15	113.20	1.05	0.03	7.0
YQ_022_020	MCD008115	113.20	114.00	0.80	0.02	3.2
YQ_022_020	MCD008116	114.00	115.20	1.20	0.03	2.7
YQ_022_020	MCD008117	115.20	116.05	0.85	0.01	1.7
YQ_022_020	MCD008118	116.05	116.45	0.40	0.03	2.6
YQ_022_020	MCD008119	116.45	117.10	0.65	0.03	1.5
YQ_022_020	MCD008121	117.10	118.25	1.15	0.02	3.2
YQ_022_020	MCD008122	118.25	119.45	1.20	0.01	1.6
YQ_022_020	MCD008123	119.45	120.50	1.05	0.01	0.8
YQ_022_020	MCD008124	120.50	121.00	0.50	0.01	1.1
YQ_022_020	MCD008125	121.00	122.50	1.50	0.01	3.7
YQ_022_020	MCD008126	122.50	123.80	1.30	0.01	5.6
YQ_022_020	MCD008127	123.80	125.30	1.50	0.02	5.4
YQ_022_020	MCD008128	125.30	126.40	1.10	0.09	0.7
YQ_022_020	MCD008129	126.40	127.70	1.30	0.03	0.6
YQ_022_020	MCD008131	127.70	129.00	1.30	0.01	1.3
YQ_022_021	MCD008132	111.65	112.55	0.90	0.00	0.3
YQ_022_021	MCD008133	112.55	112.85	0.30	0.00	0.3
YQ_022_021	MCD008134	112.85	114.00	1.15	0.00	0.6
YQ_022_021	MCD008135	114.00	115.45	1.45	0.00	0.3
YQ_022_021	MCD008136	115.45	116.60	1.15	0.00	0.3
YQ_022_021	MCD008137	116.60	117.70	1.10	0.00	0.3
YQ_022_021	MCD008138	136.35	137.25	0.90	0.00	0.3
YQ_022_021	MCD008139	137.25	138.40	1.15	0.00	0.3
YQ_022_021	MCD008141	138.40	139.15	0.75	0.00	0.3
YQ_022_021	MCD008142	163.80	165.00	1.20	0.00	0.3
YQ_022_021	MCD008143	165.00	166.20	1.20	0.01	0.3
YQ_022_021	MCD008144	166.20	166.75	0.55	0.25	5.0
YQ_022_021	MCD008145	166.75	167.05	0.30	0.03	2.7
YQ_022_021	MCD008146	167.05	167.40	0.35	0.22	22.5
YQ_022_021	MCD008147	167.40	168.10	0.70	0.03	3.3
YQ_022_021	MCD008148	168.10	168.60	0.50	0.14	15.7
YQ_022_021	MCD008149	168.60	169.35	0.75	0.29	27.1
YQ_022_021	MCD008151	169.35	169.95	0.60	0.07	5.5

Yoquivo Gold-Silver Project - 2022 Drill Program - Assays

Hole ID	Sample ID	From (m)	To (m)	Interval (m)	Au (ppm)	Ag (ppm)
YQ_022_021	MCD008152	169.95	171.00	1.05	0.01	1.4
YQ_022_021	MCD008153	171.00	172.45	1.45	0.00	0.5
YQ_022_021	MCD008154	172.45	172.90	0.45	0.01	0.3
YQ_022_021	MCD008155	172.90	174.20	1.30	0.00	0.3
YQ_022_021	MCD008156	174.20	175.40	1.20	0.01	0.3
YQ_022_021	MCD008157	175.40	176.40	1.00	0.01	0.3
YQ_022_021	MCD008158	176.40	177.85	1.45	0.00	0.3
YQ_022_021	MCD008159	177.85	179.10	1.25	0.00	0.3
YQ_022_021	MCD008161	179.10	180.25	1.15	0.00	0.5
YQ_022_021	MCD008162	180.25	181.55	1.30	0.01	1.1
YQ_022_021	MCD008163	181.55	182.90	1.35	0.01	0.5
YQ_022_021	MCD008164	201.40	202.30	0.90	0.00	0.3
YQ_022_021	MCD008165	202.30	203.10	0.80	0.09	6.4
YQ_022_021	MCD008166	203.10	203.70	0.60	0.04	2.6
YQ_022_021	MCD008167	203.70	204.10	0.40	0.01	0.3
YQ_022_021	MCD008168	213.00	214.10	1.10	0.00	0.3
YQ_022_021	MCD008169	214.10	214.40	0.30	0.13	8.6
YQ_022_021	MCD008171	214.40	215.25	0.85	0.01	1.3
YQ_022_021	MCD008172	221.05	222.00	0.95	0.05	0.3
YQ_022_021	MCD008173	222.00	223.10	1.10	0.01	0.8
YQ_022_021	MCD008174	228.00	228.80	0.80	0.01	0.3
YQ_022_021	MCD008175	228.80	229.15	0.35	0.03	0.6
YQ_022_021	MCD008176	229.15	230.00	0.85	0.00	0.3
YQ_022_021	MCD008177	236.25	237.70	1.45	0.01	0.3
YQ_022_021	MCD008178	237.70	238.45	0.75	0.01	0.3
YQ_022_021	MCD008179	238.45	239.00	0.55	0.01	0.3
YQ_022_021	MCD008181	239.00	239.55	0.55	0.02	0.7
YQ_022_021	MCD008182	239.55	240.00	0.45	0.11	0.8
YQ_022_021	MCD008183	240.00	240.55	0.55	0.02	0.3
YQ_022_021	MCD008184	240.55	241.10	0.55	0.01	0.3
YQ_022_021	MCD008185	241.10	242.35	1.25	0.01	0.5
YQ_022_021	MCD008186	242.35	243.25	0.90	0.04	5.3
YQ_022_021	MCD008187	243.25	244.35	1.10	0.08	10.9
YQ_022_021	MCD008188	244.35	245.15	0.80	2.36	76.5
YQ_022_021	MCD008189	245.25	246.00	0.75	0.03	8.1
YQ_022_021	MCD008191	251.45	252.55	1.10	0.05	5.6
YQ_022_021	MCD008192	252.55	253.70	1.15	0.02	5.2
YQ_022_021	MCD008193	253.70	254.25	0.55	0.05	4.6
YQ_022_021	MCD008194	254.25	254.75	0.50	0.08	5.9
YQ_022_021	MCD008195	254.75	255.80	1.05	0.04	7.2
YQ_022_021	MCD008196	255.80	256.95	1.15	0.05	1.9
YQ_022_021	MCD008197	256.95	257.90	0.95	0.07	6.0
YQ_022_021	MCD008198	257.90	259.00	1.10	0.26	4.5
YQ_022_021	MCD008199	259.00	260.15	1.15	0.24	23.1
YQ_022_021	MCD008201	260.15	261.00	0.85	0.01	1.0
YQ_022_021	MCD008202	261.00	261.70	0.70	0.12	2.1
YQ_022_021	MCD008203	261.70	262.25	0.55	0.18	0.9
YQ_022_021	MCD008204	262.25	262.85	0.60	2.59	19.8
YQ_022_021	MCD008205	262.85	264.00	1.15	0.43	1.4
YQ_022_021	MCD008206	264.00	265.50	1.50	0.02	1.3
YQ_022_021	MCD008207	265.50	266.60	1.10	0.02	1.5
YQ_022_021	MCD008208	266.60	267.50	0.90	0.07	1.3
YQ_022_021	MCD008209	267.50	268.85	1.35	0.03	0.8

Yoquivo Gold-Silver Project - 2022 Drill Program - Assays

Hole ID	Sample ID	From (m)	To (m)	Interval (m)	Au (ppm)	Ag (ppm)
YQ_022_021	MCD008211	268.85	270.60	1.75	0.66	0.8
YQ_022_021	MCD008212	270.60	271.25	0.65	0.14	1.9
YQ_022_021	MCD008213	275.65	276.15	0.50	0.01	0.6
YQ_022_021	MCD008214	276.15	277.30	1.15	0.07	0.3
YQ_022_021	MCD008215	277.30	278.70	1.40	0.02	1.0
YQ_022_021	MCD008216	278.70	280.20	1.50	0.02	0.5
YQ_022_021	MCD008217	291.15	291.95	0.80	0.00	0.3
YQ_022_021	MCD008218	291.95	292.65	0.70	0.00	0.3
YQ_022_022	MCD008219	14.50	14.70	0.20	0.00	0.9
YQ_022_022	MCD008221	14.70	15.05	0.35	0.00	0.3
YQ_022_022	MCD008222	15.05	16.10	1.05	0.00	0.5
YQ_022_022	MCD008223	16.10	16.65	0.55	0.00	39.0
YQ_022_022	MCD008224	16.65	17.25	0.60	0.00	0.7
YQ_022_022	MCD008225	17.25	18.10	0.85	0.01	1.1
YQ_022_022	MCD008226	18.10	18.95	0.85	0.05	14.2
YQ_022_022	MCD008227	28.95	29.35	0.40	0.00	0.3
YQ_022_022	MCD008228	29.35	29.55	0.20	0.01	1.1
YQ_022_022	MCD008229	29.55	30.10	0.55	0.00	1.0
YQ_022_022	MCD008231	30.10	30.50	0.40	0.00	0.6
YQ_022_022	MCD008232	30.50	31.85	1.35	0.26	28.4
YQ_022_022	MCD008233	31.85	33.20	1.35	0.01	2.3
YQ_022_022	MCD008234	33.20	34.70	1.50	0.07	20.0
YQ_022_022	MCD008235	34.70	35.70	1.00	0.05	16.8
YQ_022_022	MCD008236	35.70	36.65	0.95	0.38	101.0
YQ_022_022	MCD008237	36.65	38.05	1.40	0.87	202.0
YQ_022_022	MCD008238	38.05	39.30	1.25	6.64	811.0
YQ_022_022	MCD008239	39.30	39.60	0.30	1.10	235.0
YQ_022_022	MCD008241	39.60	41.05	1.45	2.28	391.0
YQ_022_022	MCD008242	41.05	41.95	0.90	0.08	14.9
YQ_022_022	MCD008243	41.95	42.15	0.20	0.09	20.5
YQ_022_022	MCD008244	42.15	43.55	1.40	0.03	9.2
YQ_022_022	MCD008245	43.55	45.00	1.45	0.11	28.3
YQ_022_022	MCD008246	45.00	45.90	0.90	0.16	41.3
YQ_022_022	MCD008247	45.90	47.30	1.40	0.15	43.3
YQ_022_022	MCD008248	47.30	47.75	0.45	0.02	2.5
YQ_022_022	MCD008249	47.75	48.75	1.00	0.03	4.6
YQ_022_022	MCD008595	48.75	50.00	1.25	0.05	7.2
YQ_022_022	MCD008596	50.00	50.20	0.20	0.28	12.3
YQ_022_022	MCD008597	50.20	51.40	1.20	0.04	8.6
YQ_022_022	MCD008598	54.40	55.90	1.50	0.12	15.9
YQ_022_022	MCD008599	55.90	56.70	0.80	0.66	23.9
YQ_022_022	MCD008601	56.70	58.05	1.35	0.77	25.7
YQ_022_022	MCD008602	58.05	59.00	0.95	0.66	8.4
YQ_022_022	MCD008603	66.00	67.00	1.00	0.01	2.0
YQ_022_022	MCD008604	67.00	67.50	0.50	0.02	3.4
YQ_022_022	MCD008605	67.50	68.35	0.85	0.04	6.4
YQ_022_022	MCD008606	68.35	68.80	0.45	1.22	284.0
YQ_022_022	MCD008607	68.80	70.00	1.20	0.08	20.4
YQ_022_022	MCD008608	109.90	110.50	0.60	0.05	9.4
YQ_022_022	MCD008609	110.50	111.45	0.95	0.07	15.5
YQ_022_022	MCD008611	111.45	112.15	0.70	0.03	3.9
YQ_022_022	MCD008612	156.95	158.40	1.45	0.05	5.6
YQ_022_022	MCD008613	158.40	159.65	1.25	0.08	2.6

Yoquivo Gold-Silver Project - 2022 Drill Program - Assays

Hole ID	Sample ID	From (m)	To (m)	Interval (m)	Au (ppm)	Ag (ppm)
YQ_022_022	MCD008614	159.65	161.10	1.45	0.04	3.4
YQ_022_022	MCD008615	161.10	161.70	0.60	0.02	1.4
YQ_022_022	MCD008616	161.70	162.00	0.30	0.02	1.0
YQ_022_022	MCD008617	162.00	163.15	1.15	0.05	4.4
YQ_022_022	MCD008618	163.15	164.35	1.20	0.01	0.3
YQ_022_022	MCD008619	215.60	217.00	1.40	0.01	1.5
YQ_022_022	MCD008621	217.00	218.50	1.50	0.01	4.7
YQ_022_022	MCD008622	218.50	219.45	0.95	0.54	99.8
YQ_022_022	MCD008623	219.45	221.15	1.70	0.09	46.8
YQ_022_022	MCD008624	221.15	222.00	0.85	1.76	250.0
YQ_022_022	MCD008625	222.00	223.05	1.05	0.17	32.6
YQ_022_022	MCD008626	223.05	223.90	0.85	0.94	179.0
YQ_022_022	MCD008627	223.90	225.30	1.40	0.03	7.6
YQ_022_022	MCD008628	225.30	226.55	1.25	0.08	17.7
YQ_022_022	MCD008629	226.55	227.55	1.00	0.11	22.5
YQ_022_022	MCD008631	227.55	227.80	0.25	0.11	44.9
YQ_022_022	MCD008632	227.80	228.90	1.10	0.04	9.0
YQ_022_022	MCD008633	228.90	229.50	0.60	0.75	135.0
YQ_022_022	MCD008634	229.50	231.00	1.50	0.13	44.0
YQ_022_022	MCD008635	231.00	232.35	1.35	0.01	4.7
YQ_022_022	MCD008636	232.35	232.90	0.55	0.15	55.5
YQ_022_022	MCD008637	232.90	233.10	0.20	0.24	75.9
YQ_022_022	MCD008638	233.10	234.00	0.90	0.58	162.0
YQ_022_022	MCD008639	234.00	235.00	1.00	0.14	38.0
YQ_022_022	MCD008641	235.00	236.35	1.35	0.12	40.2
YQ_022_022	MCD008642	236.35	237.70	1.35	0.29	91.4
YQ_022_022	MCD008643	237.70	239.05	1.35	0.60	139.0
YQ_022_022	MCD008644	239.05	240.40	1.35	0.10	25.3
YQ_022_022	MCD008645	240.40	241.85	1.45	0.45	117.0
YQ_022_022	MCD008646	241.85	242.80	0.95	0.92	122.0
YQ_022_022	MCD008647	242.80	244.15	1.35	0.15	31.8
YQ_022_022	MCD008648	244.15	245.60	1.45	0.10	18.3
YQ_022_022	MCD008649	245.60	247.00	1.40	0.23	60.0
YQ_022_022	MCD008651	247.00	247.80	0.80	0.24	35.2
YQ_022_022	MCD008652	247.80	248.90	1.10	0.25	46.0
YQ_022_022	MCD008653	248.90	250.35	1.45	0.18	52.5
YQ_022_022	MCD008654	250.35	251.55	1.20	0.45	124.0
YQ_022_022	MCD008655	251.55	252.20	0.65	0.67	145.0
YQ_022_022	MCD008656	252.20	252.50	0.30	0.34	82.2
YQ_022_022	MCD008657	252.50	253.90	1.40	0.18	40.2
YQ_022_022	MCD008658	277.30	277.85	0.55	0.02	10.0
YQ_022_022	MCD008659	277.85	278.75	0.90	0.08	43.9
YQ_022_022	MCD008661	278.75	279.55	0.80	0.01	3.5
YQ_022_022	MCD008662	285.00	286.00	1.00	0.01	0.5
YQ_022_022	MCD008663	286.00	287.35	1.35	0.00	0.9
YQ_022_022	MCD008664	287.35	288.30	0.95	0.00	0.6
YQ_022_022	MCD008665	288.30	289.30	1.00	0.01	0.8
YQ_022_022	MCD008666	313.40	314.55	1.15	0.08	44.2
YQ_022_022	MCD008667	314.55	315.85	1.30	0.10	47.3
YQ_022_022	MCD008668	315.85	317.20	1.35	0.03	15.3
YQ_022_022	MCD008669	317.20	318.45	1.25	0.05	38.1
YQ_022_022	MCD008671	318.45	319.15	0.70	0.11	68.0
YQ_022_022	MCD008672	319.15	319.65	0.50	0.08	48.1

Yoquivo Gold-Silver Project - 2022 Drill Program - Assays

Hole ID	Sample ID	From (m)	To (m)	Interval (m)	Au (ppm)	Ag (ppm)
YQ_022_022	MCD008673	319.65	321.00	1.35	0.04	19.2
YQ_022_022	MCD008674	321.00	322.50	1.50	0.14	43.1
YQ_022_022	MCD008675	322.50	324.00	1.50	0.02	8.9
YQ_022_022	MCD008676	324.00	325.40	1.40	0.00	0.3
YQ_022_022	MCD008677	325.40	326.95	1.55	0.01	2.0
YQ_022_022	MCD008678	326.95	327.40	0.45	0.00	1.1
YQ_022_022	MCD008679	327.40	327.65	0.25	0.00	0.7
YQ_022_022	MCD008681	327.65	328.80	1.15	0.01	0.7
YQ_022_022	MCD008682	328.80	329.75	0.95	0.01	0.9
YQ_022_022	MCD008683	329.75	330.35	0.60	0.01	1.0
YQ_022_022	MCD008684	330.35	337.55	7.20	0.03	20.0
YQ_022_022	MCD008685	337.55	338.80	1.25	0.01	3.2
YQ_022_022	MCD008686	338.80	340.25	1.45	0.05	13.1
YQ_022_022	MCD008687	340.25	341.75	1.50	0.28	62.0
YQ_022_022	MCD008688	341.75	342.10	0.35	2.46	614.0
YQ_022_022	MCD008689	342.10	342.50	0.40	0.45	180.0
YQ_022_022	MCD008691	342.50	343.35	0.85	0.15	56.1
YQ_022_022	MCD008692	343.35	344.10	0.75	0.13	20.6
YQ_022_022	MCD008693	344.10	344.95	0.85	9.28	161.0
YQ_022_023	MCD008694	1.40	2.90	1.50	0.04	6.5
YQ_022_023	MCD008695	2.90	3.30	0.40	0.27	36.3
YQ_022_023	MCD008696	3.30	3.85	0.55	0.03	6.5
YQ_022_023	MCD008697	3.85	5.35	1.50	0.03	5.1
YQ_022_023	MCD008698	5.35	6.00	0.65	0.02	5.1
YQ_022_023	MCD008699	16.25	17.15	0.90	0.00	1.1
YQ_022_023	MCD008701	17.15	17.35	0.20	0.01	2.6
YQ_022_023	MCD008702	17.35	18.60	1.25	0.01	1.9
YQ_022_023	MCD008703	23.80	25.05	1.25	0.01	1.3
YQ_022_023	MCD008704	25.05	26.25	1.20	0.02	2.9
YQ_022_023	MCD008705	26.25	26.45	0.20	0.01	1.0
YQ_022_023	MCD008706	26.45	27.15	0.70	0.01	1.6
YQ_022_023	MCD008707	27.15	28.25	1.10	0.00	1.3
YQ_022_023	MCD008708	28.25	29.00	0.75	0.01	1.7
YQ_022_023	MCD008709	29.00	30.20	1.20	0.01	1.9
YQ_022_023	MCD008711	30.20	31.75	1.55	0.00	0.7
YQ_022_023	MCD008712	67.15	68.50	1.35	0.04	2.5
YQ_022_023	MCD008713	68.50	69.50	1.00	0.03	2.4
YQ_022_023	MCD008714	69.50	70.50	1.00	0.03	3.2
YQ_022_023	MCD008715	77.20	78.75	1.55	0.02	3.0
YQ_022_023	MCD008716	78.75	80.30	1.55	0.07	5.7
YQ_022_023	MCD008717	80.30	81.70	1.40	0.07	10.7
YQ_022_023	MCD008718	81.70	83.05	1.35	0.07	10.7
YQ_022_023	MCD008719	83.05	83.25	0.20	0.76	103.0
YQ_022_023	MCD008721	83.25	84.35	1.10	0.02	2.9
YQ_022_023	MCD008722	87.00	88.50	1.50	0.02	4.2
YQ_022_023	MCD008723	88.50	90.00	1.50	0.01	2.0
YQ_022_023	MCD008724	90.00	90.55	0.55	0.04	8.0
YQ_022_023	MCD008725	90.55	91.55	1.00	0.03	5.7
YQ_022_023	MCD008726	91.55	91.85	0.30	0.03	4.3
YQ_022_023	MCD008727	91.85	93.00	1.15	0.02	4.2
YQ_022_023	MCD008728	93.00	94.45	1.45	0.03	6.5
YQ_022_023	MCD008729	94.45	94.60	0.15	2.16	222.0
YQ_022_023	MCD008731	94.60	95.70	1.10	0.12	24.2

Yoquivo Gold-Silver Project - 2022 Drill Program - Assays

Hole ID	Sample ID	From (m)	To (m)	Interval (m)	Au (ppm)	Ag (ppm)
YQ_022_023	MCD008732	116.65	118.00	1.35	0.00	0.7
YQ_022_023	MCD008733	118.00	118.50	0.50	2.77	337.0
YQ_022_023	MCD008734	118.50	120.00	1.50	0.03	6.4
YQ_022_023	MCD008735	120.00	121.40	1.40	0.02	3.8
YQ_022_023	MCD008736	129.45	130.40	0.95	0.03	2.3
YQ_022_023	MCD008737	130.40	131.40	1.00	0.06	6.8
YQ_022_023	MCD008738	131.40	132.85	1.45	0.02	1.9
YQ_022_024	MCD008739	8.95	9.70	0.75	0.01	1.0
YQ_022_024	MCD008741	9.70	10.10	0.40	0.01	4.4
YQ_022_024	MCD008742	13.70	14.20	0.50	0.01	1.8
YQ_022_024	MCD008743	35.70	36.30	0.60	0.01	2.3
YQ_022_024	MCD008744	36.30	37.85	1.55	0.01	0.7
YQ_022_024	MCD008745	37.85	37.95	0.10	0.01	2.0
YQ_022_024	MCD008746	70.20	71.35	1.15	0.01	0.9
YQ_022_024	MCD008747	71.35	72.10	0.75	0.01	1.1
YQ_022_024	MCD008748	81.00	82.10	1.10	0.00	0.3
YQ_022_024	MCD008749	82.10	82.35	0.25	0.00	0.3
YQ_022_024	MCD008776	82.35	83.25	0.90	0.01	0.3
YQ_022_024	MCD008777	123.80	124.05	0.25	0.00	0.3
YQ_022_024	MCD008778	124.05	125.15	1.10	0.00	0.8
YQ_022_024	MCD008779	131.45	132.10	0.65	0.09	19.3
YQ_022_024	MCD008781	132.10	132.65	0.55	1.47	196.0
YQ_022_024	MCD008782	132.65	134.10	1.45	0.47	136.0
YQ_022_024	MCD008783	134.10	135.50	1.40	0.72	166.0
YQ_022_024	MCD008784	135.50	136.65	1.15	0.40	93.7
YQ_022_024	MCD008785	136.65	137.50	0.85	0.15	39.9
YQ_022_024	MCD008786	137.50	139.00	1.50	0.05	15.4
YQ_022_024	MCD008787	139.00	139.70	0.70	0.16	44.2
YQ_022_024	MCD008788	178.25	179.30	1.05	0.01	1.6
YQ_022_024	MCD008789	179.30	180.55	1.25	0.02	1.9
YQ_022_024	MCD008791	180.55	181.15	0.60	0.03	4.2
YQ_022_024	MCD008792	181.15	182.80	1.65	0.02	2.4
YQ_022_024	MCD008793	182.80	183.75	0.95	0.02	1.5
YQ_022_024	MCD008794	195.40	196.25	0.85	0.00	0.6
YQ_022_024	MCD008795	201.15	201.90	0.75	0.01	2.0
YQ_022_024	MCD008796	201.90	203.10	1.20	0.04	15.7
YQ_022_024	MCD008797	203.10	204.30	1.20	0.02	6.7
YQ_022_024	MCD008798	204.30	205.15	0.85	0.08	31.9
YQ_022_024	MCD008799	205.15	206.40	1.25	15.65	677.0
YQ_022_024	MCD008801	206.40	206.80	0.40	0.09	216.0
YQ_022_024	MCD008802	206.80	207.25	0.45	0.23	90.0
YQ_022_024	MCD008803	240.45	241.45	1.00	0.02	0.8
YQ_022_024	MCD008804	241.45	242.60	1.15	0.01	0.8
YQ_022_024	MCD008805	242.60	243.90	1.30	0.00	0.5
YQ_022_024	MCD008806	243.90	244.65	0.75	0.05	4.2
YQ_022_024	MCD008807	244.65	246.15	1.50	0.03	7.6
YQ_022_024	MCD008808	246.15	246.90	0.75	0.01	3.5
YQ_022_024	MCD008809	250.90	252.20	1.30	0.02	4.0
YQ_022_024	MCD008811	252.20	252.50	0.30	0.06	10.5
YQ_022_024	MCD008812	252.50	254.00	1.50	0.02	3.3
YQ_022_024	MCD008813	254.00	255.50	1.50	0.00	0.5
YQ_022_024	MCD008814	255.50	256.25	0.75	0.00	0.5
YQ_022_024	MCD008815	256.25	257.40	1.15	0.02	3.6

Yoquivo Gold-Silver Project - 2022 Drill Program - Assays

Hole ID	Sample ID	From (m)	To (m)	Interval (m)	Au (ppm)	Ag (ppm)
YQ_022_024	MCD008816	257.40	258.65	1.25	0.05	6.3
YQ_022_024	MCD008817	258.65	258.85	0.20	0.01	1.3
YQ_022_024	MCD008818	258.85	259.30	0.45	0.16	40.3
YQ_022_024	MCD008819	259.30	260.05	0.75	0.33	67.4
YQ_022_024	MCD008821	260.05	261.50	1.45	0.05	6.1
YQ_022_024	MCD008822	273.30	274.80	1.50	0.01	1.7
YQ_022_024	MCD008823	274.80	275.10	0.30	0.02	2.7
YQ_022_024	MCD008824	275.10	276.55	1.45	0.03	5.7
YQ_022_024	MCD008825	276.55	276.95	0.40	0.14	14.8
YQ_022_024	MCD008826	276.95	278.35	1.40	0.01	0.3
YQ_022_024	MCD008827	278.35	279.60	1.25	0.00	0.3
YQ_022_024	MCD008828	279.60	280.85	1.25	0.01	1.2
YQ_022_024	MCD008829	280.85	282.35	1.50	0.01	0.3
YQ_022_024	MCD008831	289.10	290.25	1.15	0.00	0.3
YQ_022_024	MCD008832	290.25	290.45	0.20	0.00	0.3
YQ_022_024	MCD008833	290.45	291.80	1.35	0.01	0.3
YQ_022_024	MCD008834	291.80	292.90	1.10	0.00	0.3
YQ_022_024	MCD008835	292.90	294.00	1.10	0.01	1.7
YQ_022_024	MCD008836	294.00	295.15	1.15	0.02	4.8
YQ_022_024	MCD008837	295.15	296.65	1.50	0.01	3.2
YQ_022_024	MCD008838	296.65	297.95	1.30	0.01	1.5
YQ_022_024	MCD008839	297.95	298.60	0.65	0.00	0.3
YQ_022_024	MCD008841	298.60	300.00	1.40	0.04	4.4